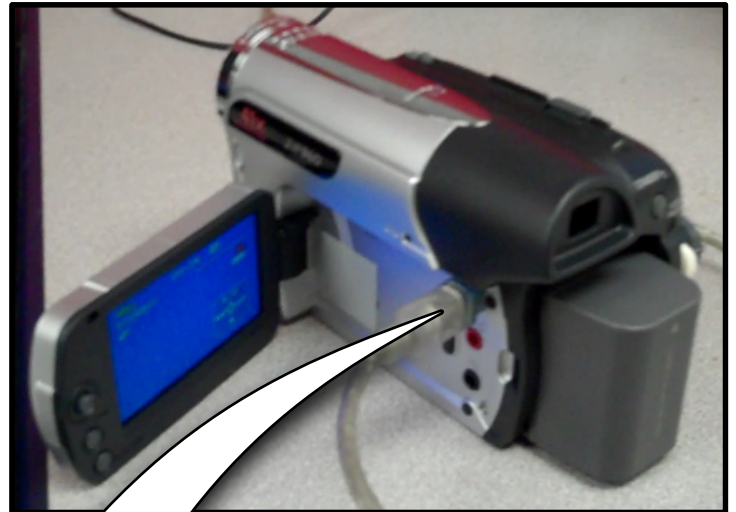


GETTING STARTED WITH FINAL CUT EXPRESS

If you are going to be capturing video from MiniDV tapes make sure to connect the camera or deck to the computer first

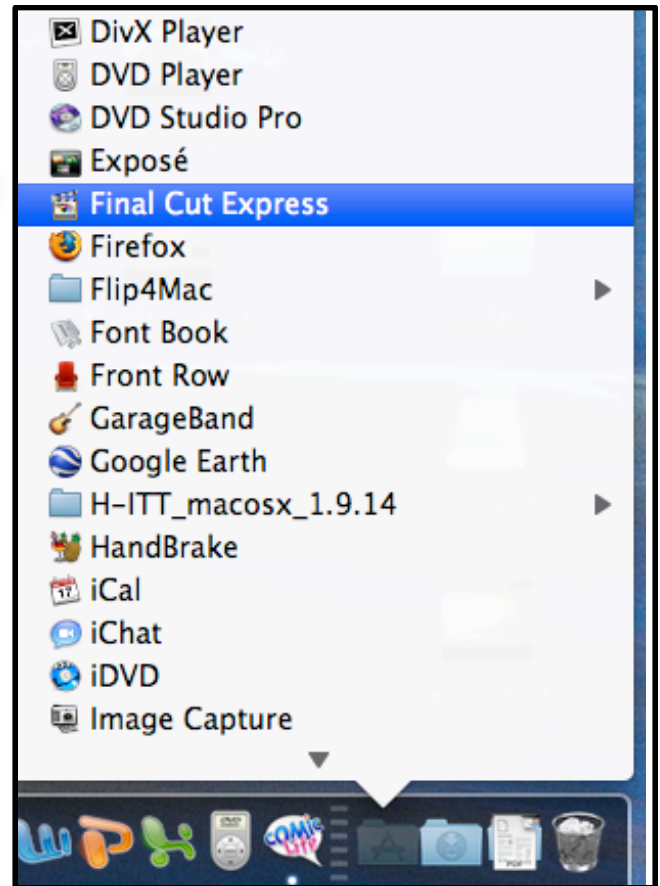


Make Sure:
-the Deck is On
-the Firewire cable is connected to both the deck and computer
-The DV button is lit/or Camera on Play

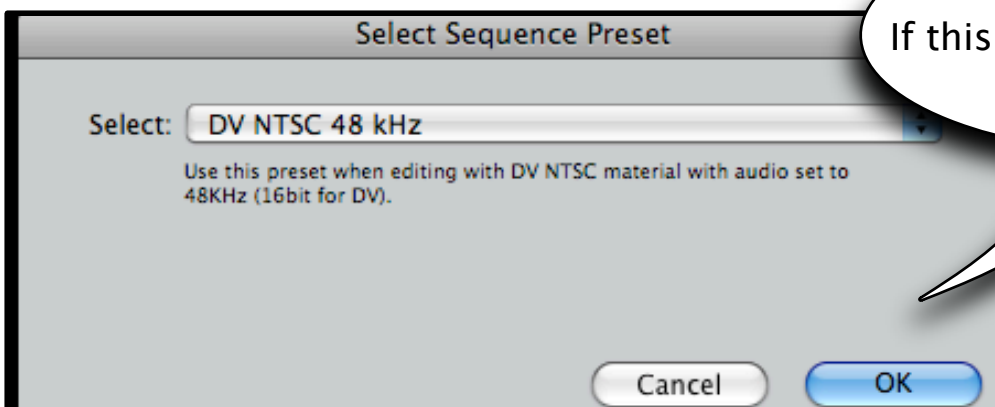


Open Final Cut Express...

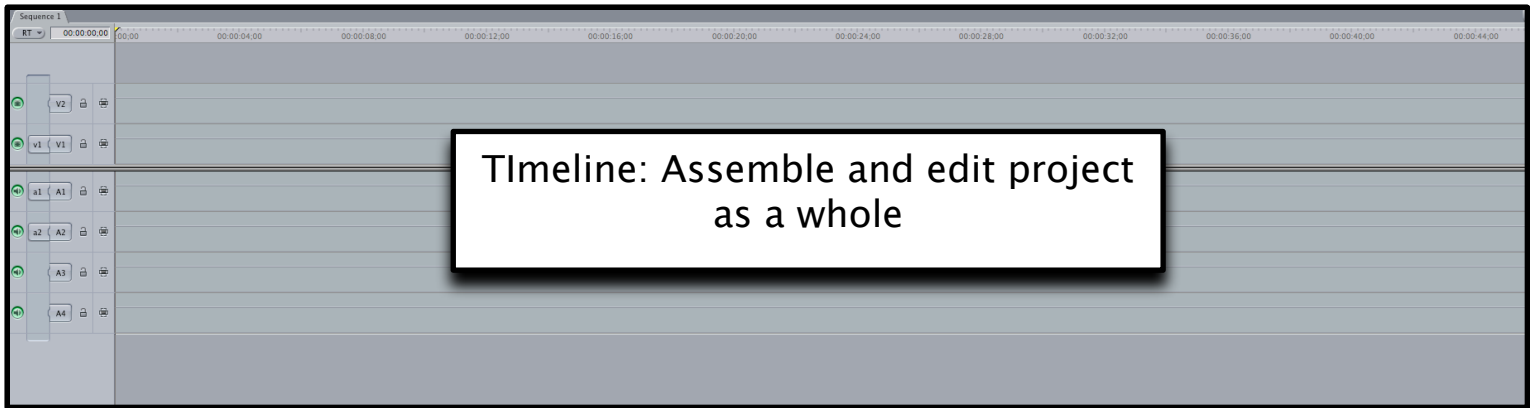
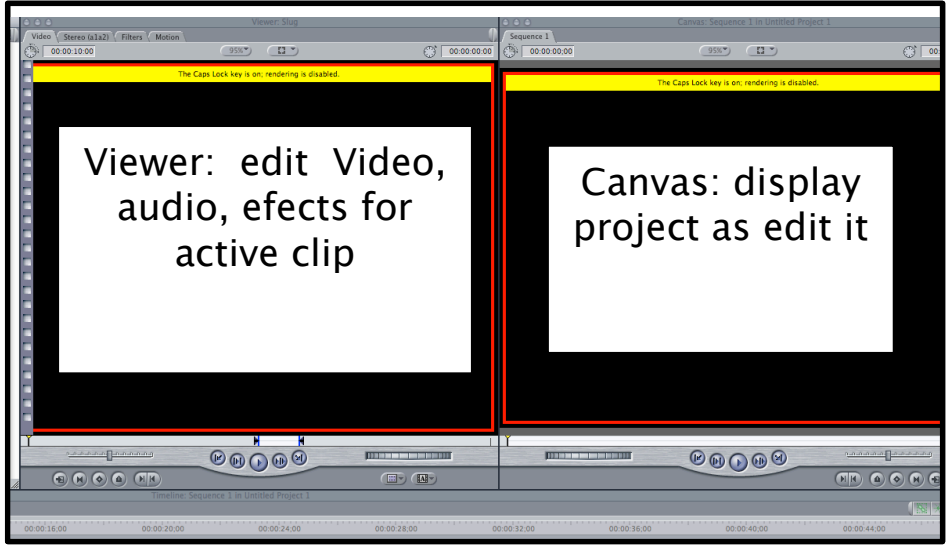
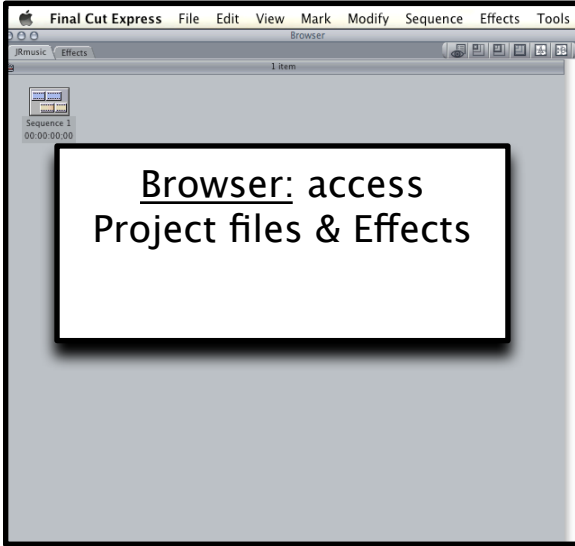
Click on Final Cut Express in the dock or Applications folder



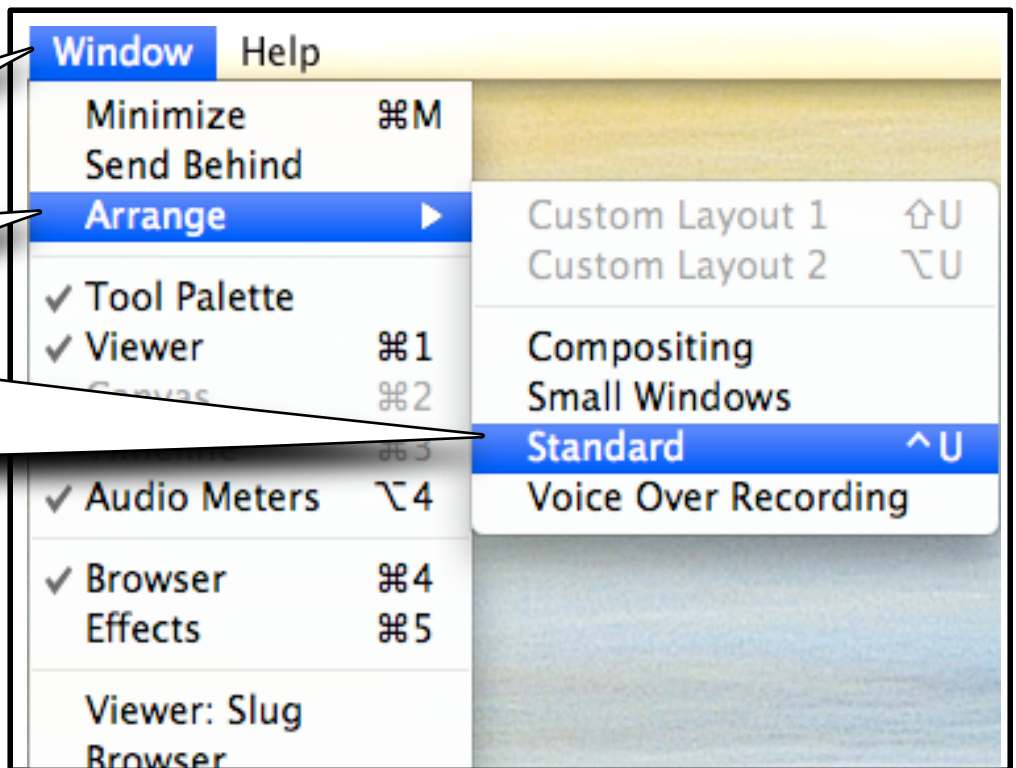
If this box appears Click "OK"

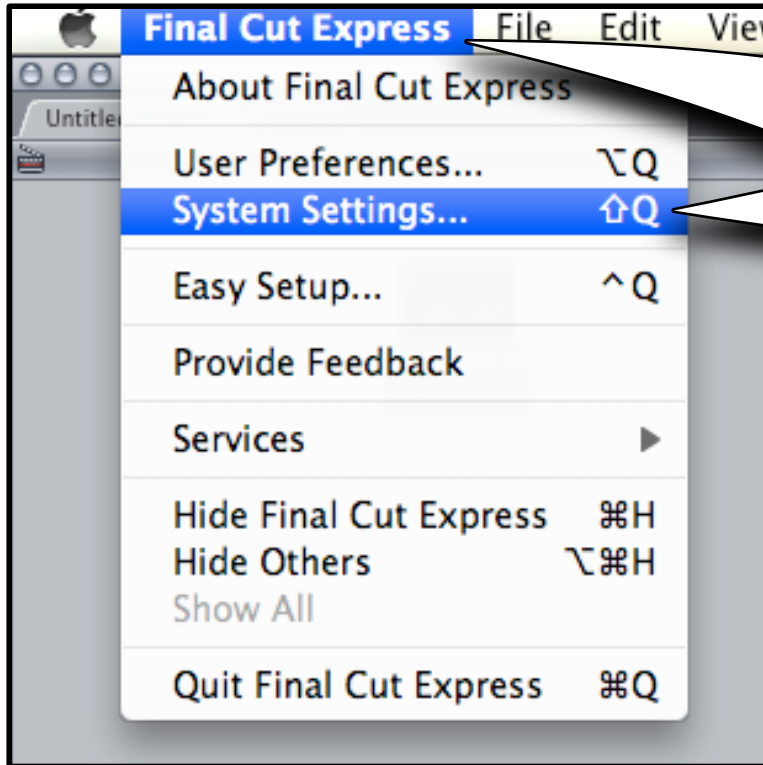


IF these windows below do not appear



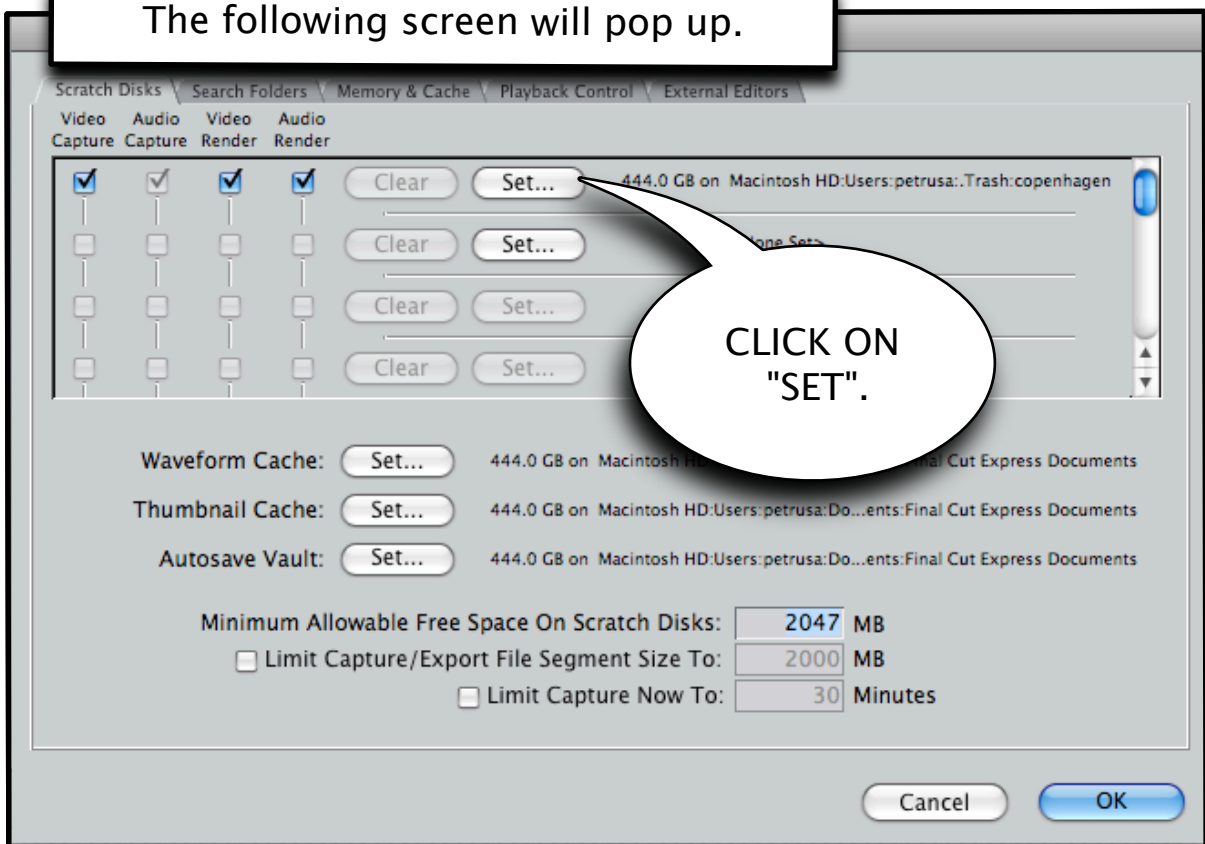
From the "Windows" menu select "Arrange" and click "Standard"



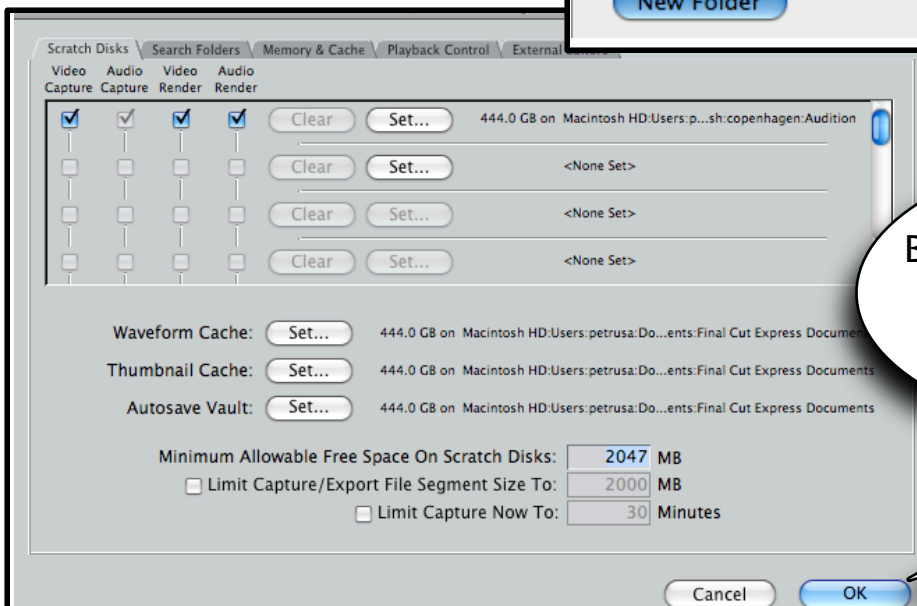
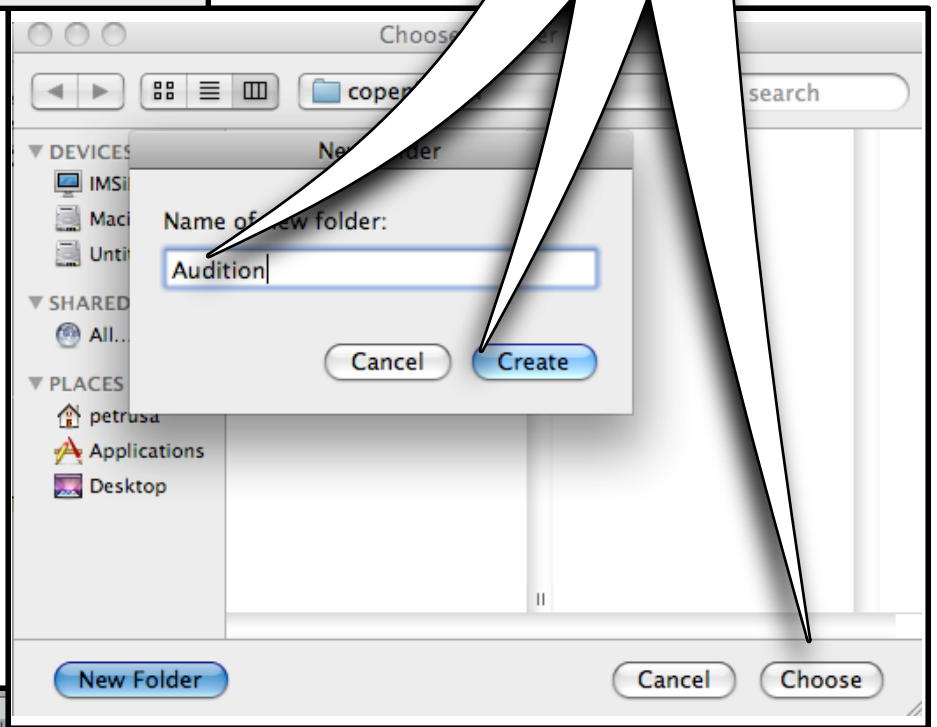
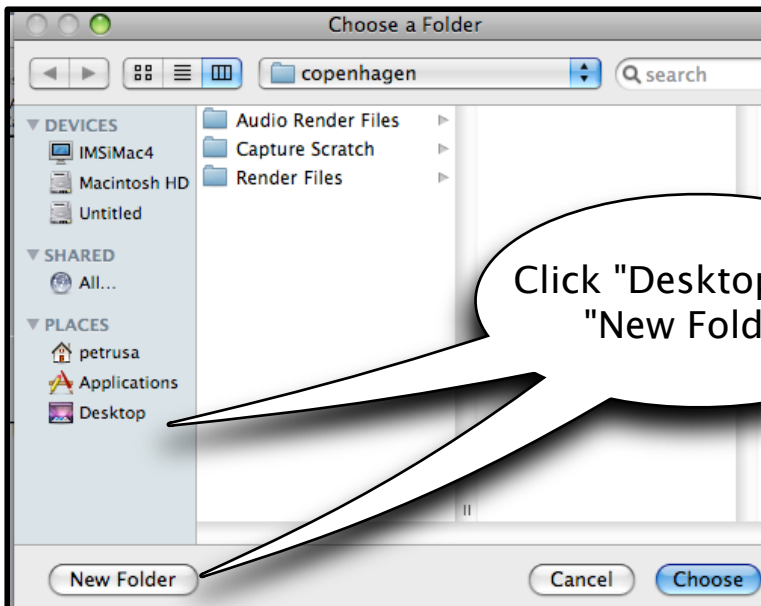


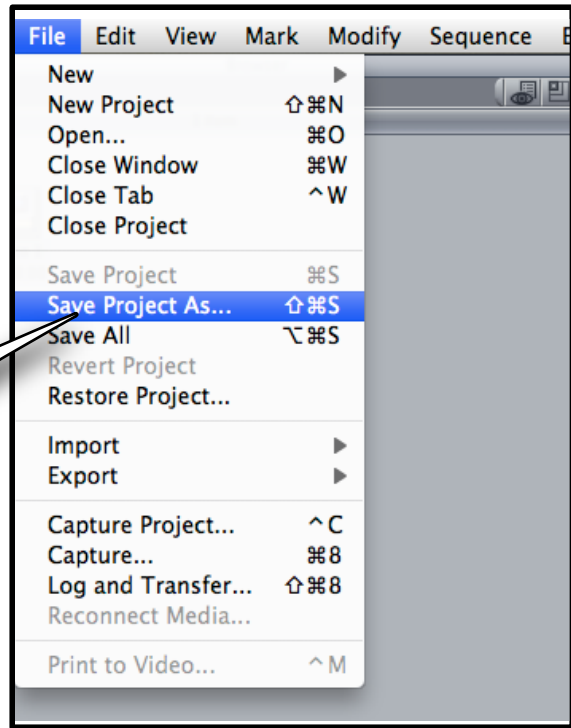
From "FINAL CUT EXPRESS" menu
CLICK "SYSTEM SETTINGS..."

The following screen will pop up.

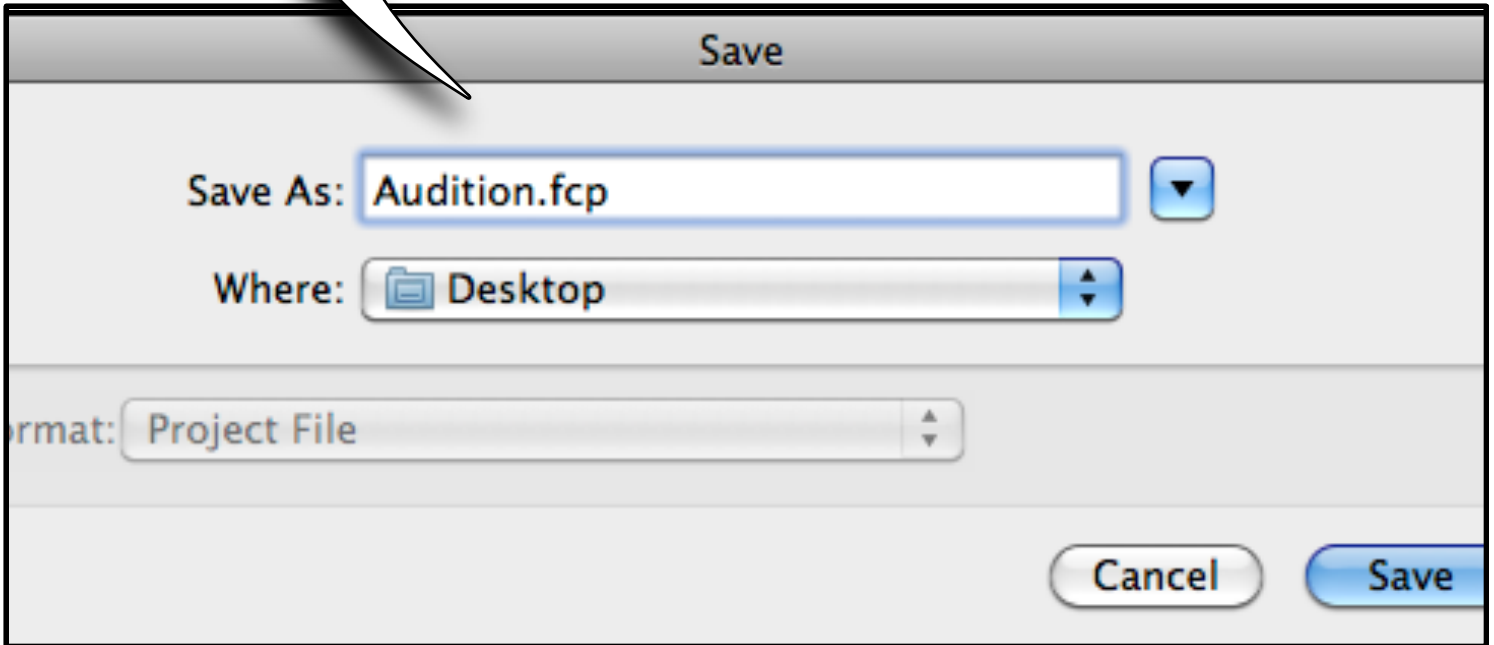


CLICK ON
"SET".

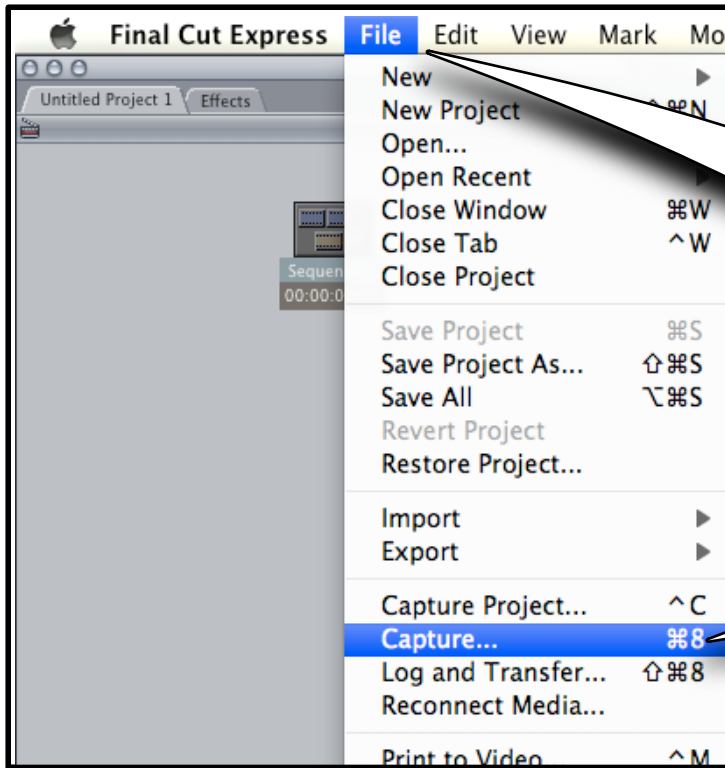




Its best to save your project to the desktop or an external hard drive before moving on.

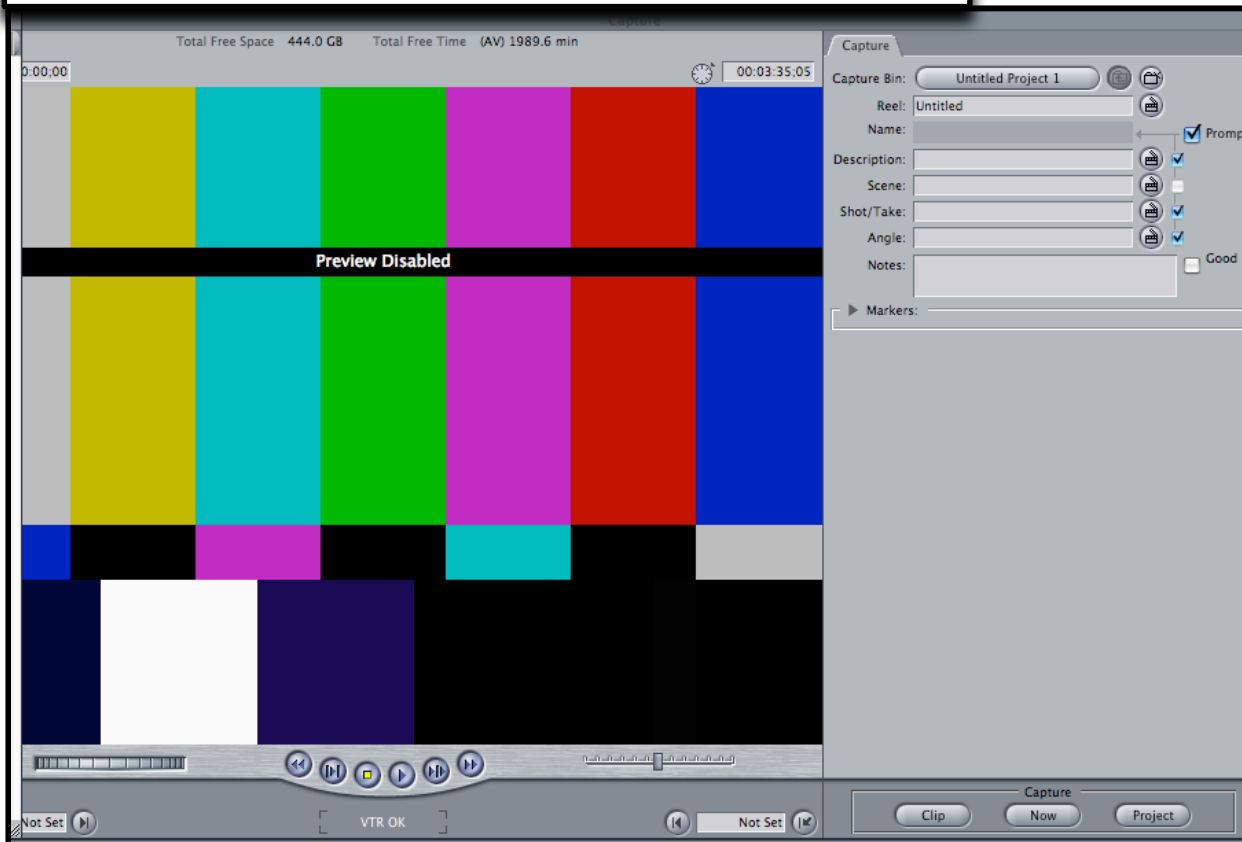


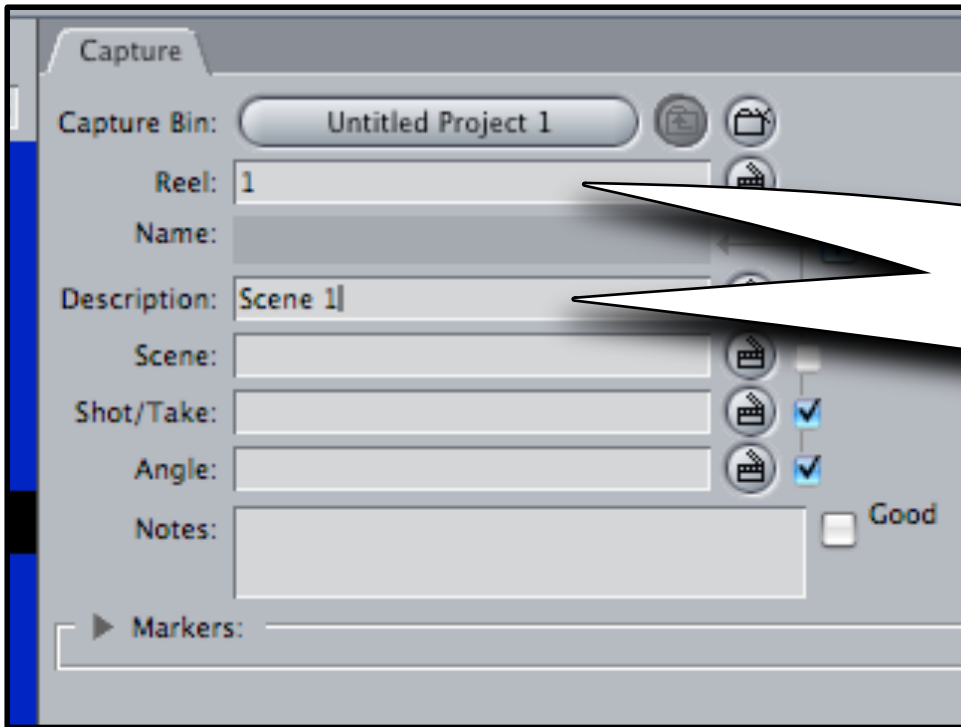
CAPTURE VIDEO



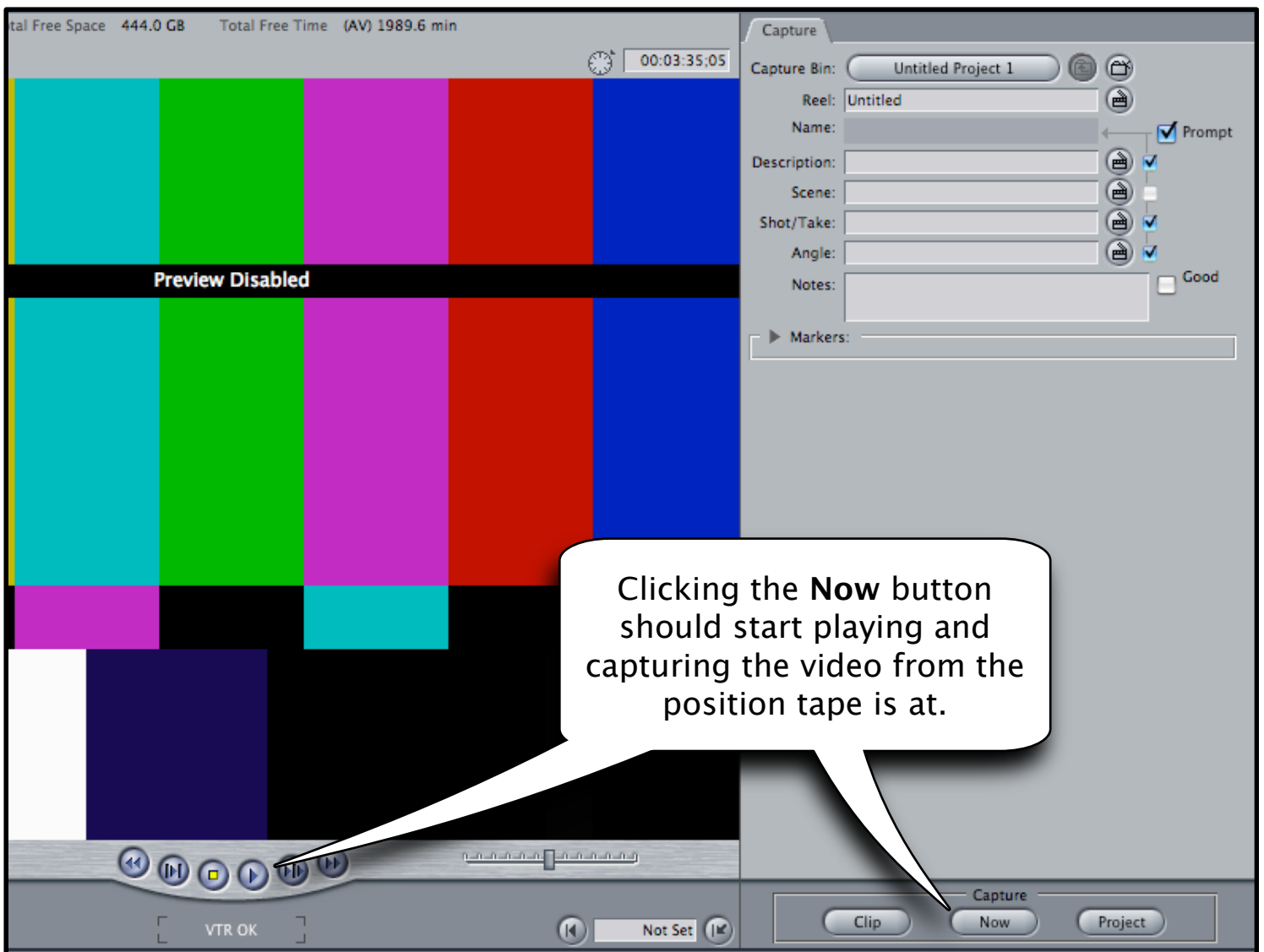
From "FILE" select
"Capture..."

THIS SCREEN WILL POP UP.



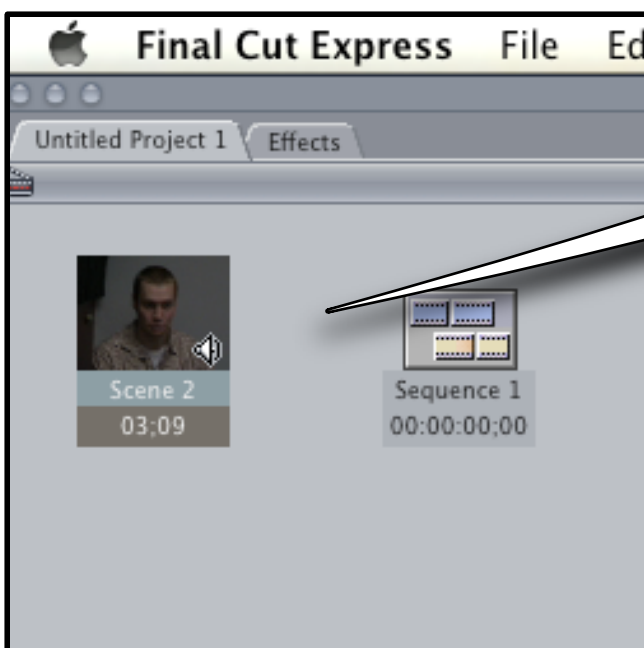


Fill in the **Reel** (name for the tape currently working with) and **Description** (name of the clip currently capturing) information



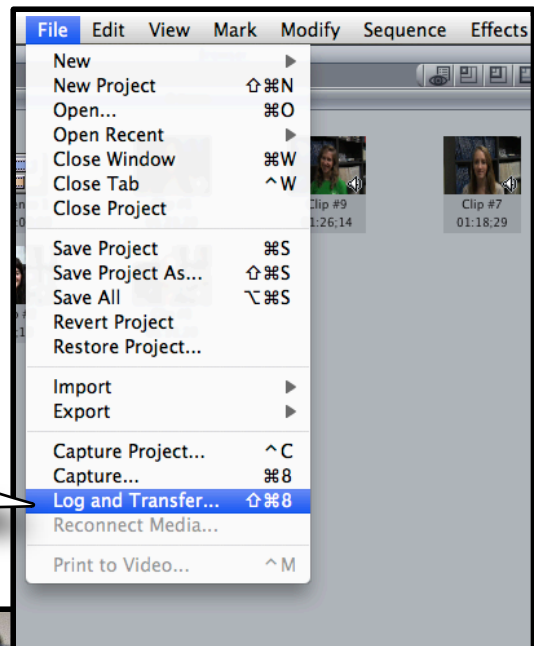
A window showing the video being captured appears. HIT "ESC" button on the keyboard to stop capture at any point.

Capturing Clip - NOW CAPTURING (press 'esc' to stop)

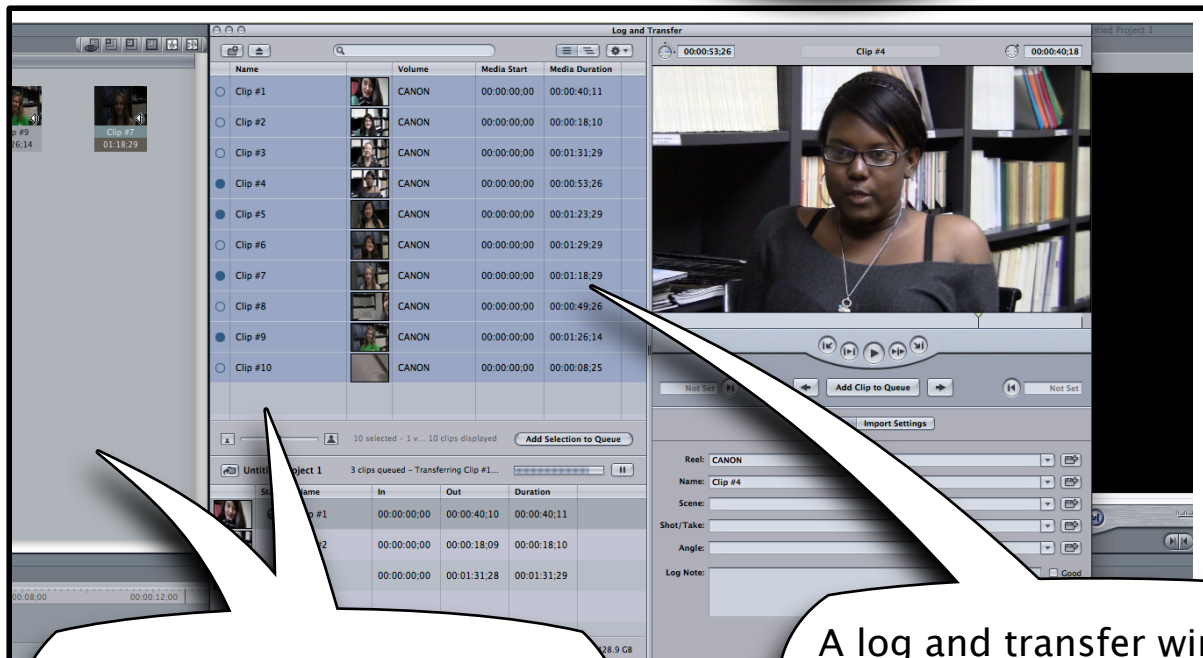


The clip will get added to the browser window.

To use video taken with an SDHC Camera, connect the camera to the computer and choose log and transfer in the file menu.



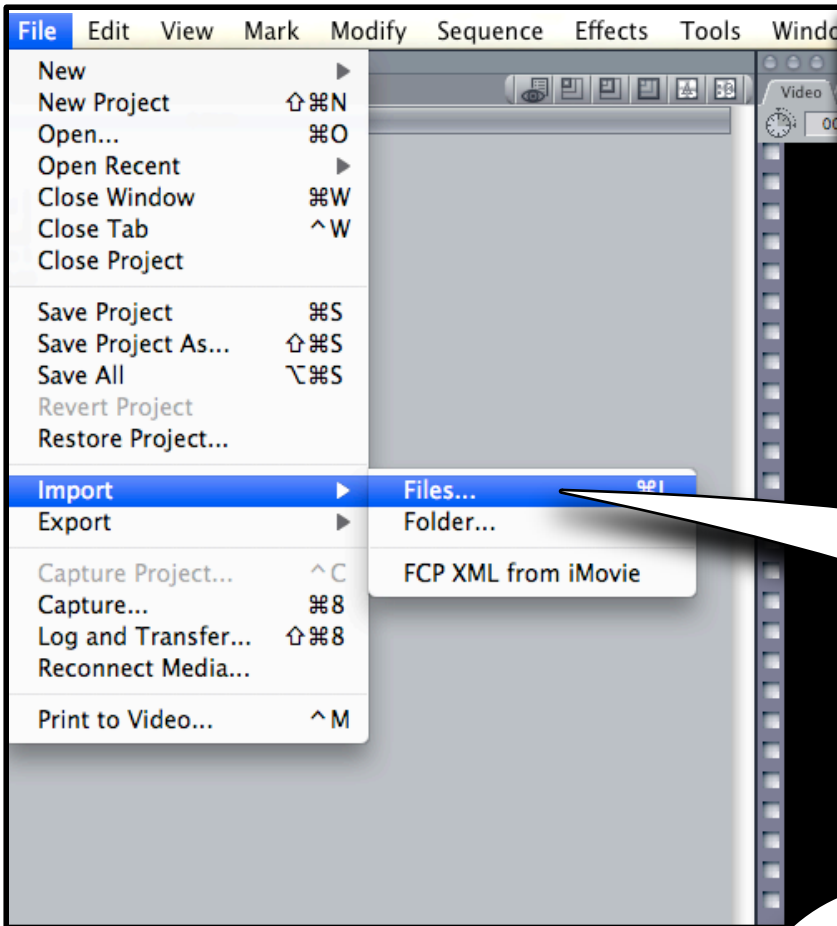
The viewing option must be selected on the camera before files will be transferred



Drag the desired video clips to the browser. You can close the log and transfer box after all desired clips are moved

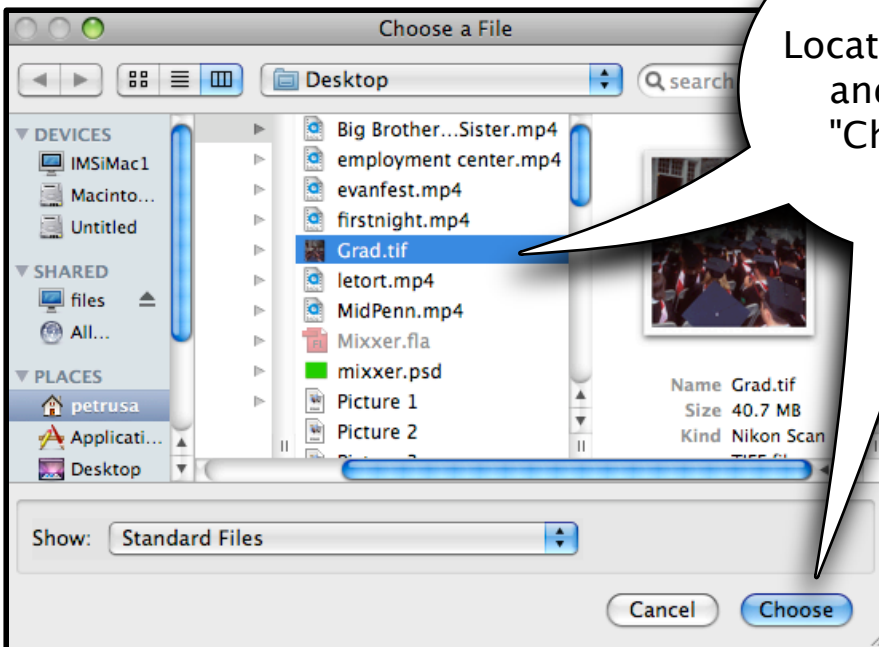
A log and transfer window will pop up and the clips from the camera will load

IMPORTING FILES

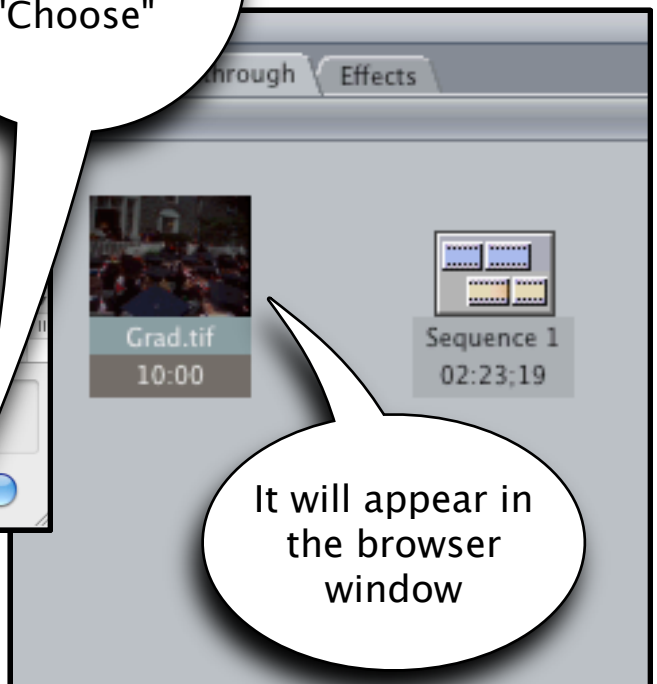


First Make sure the files are stored in the same folder as the rest of the project

From the file menu Select "import" and Click on "Files..."

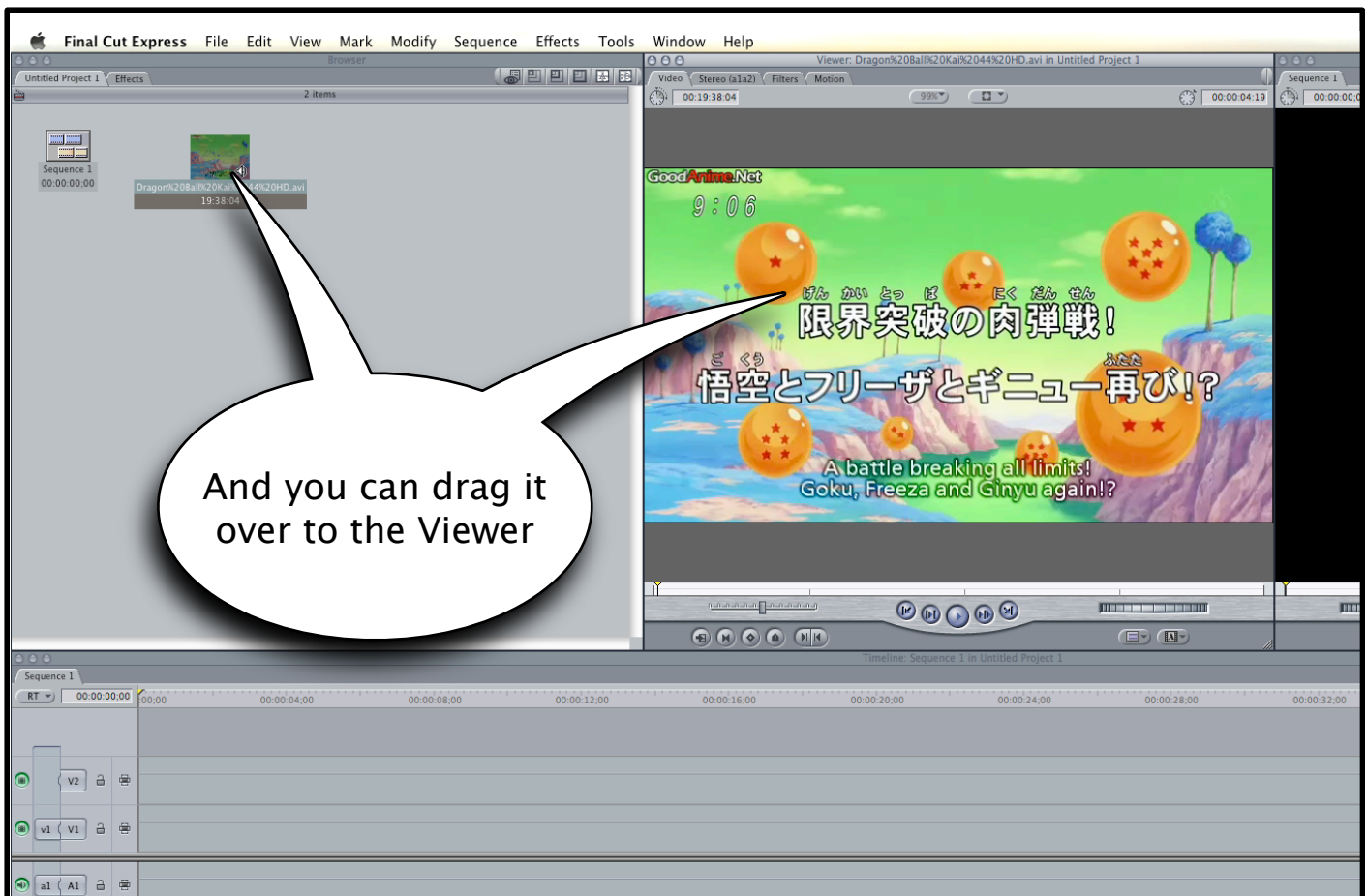
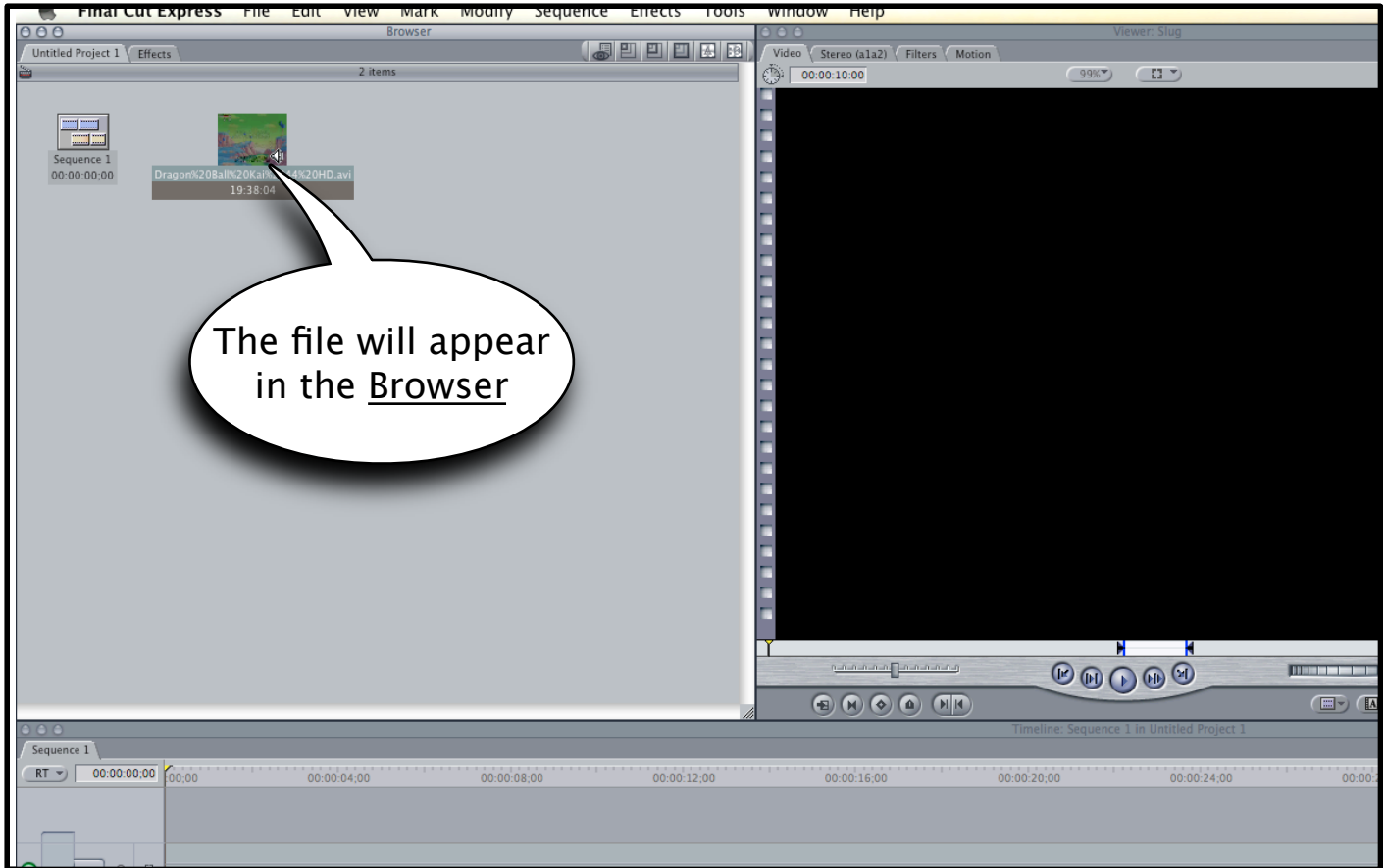


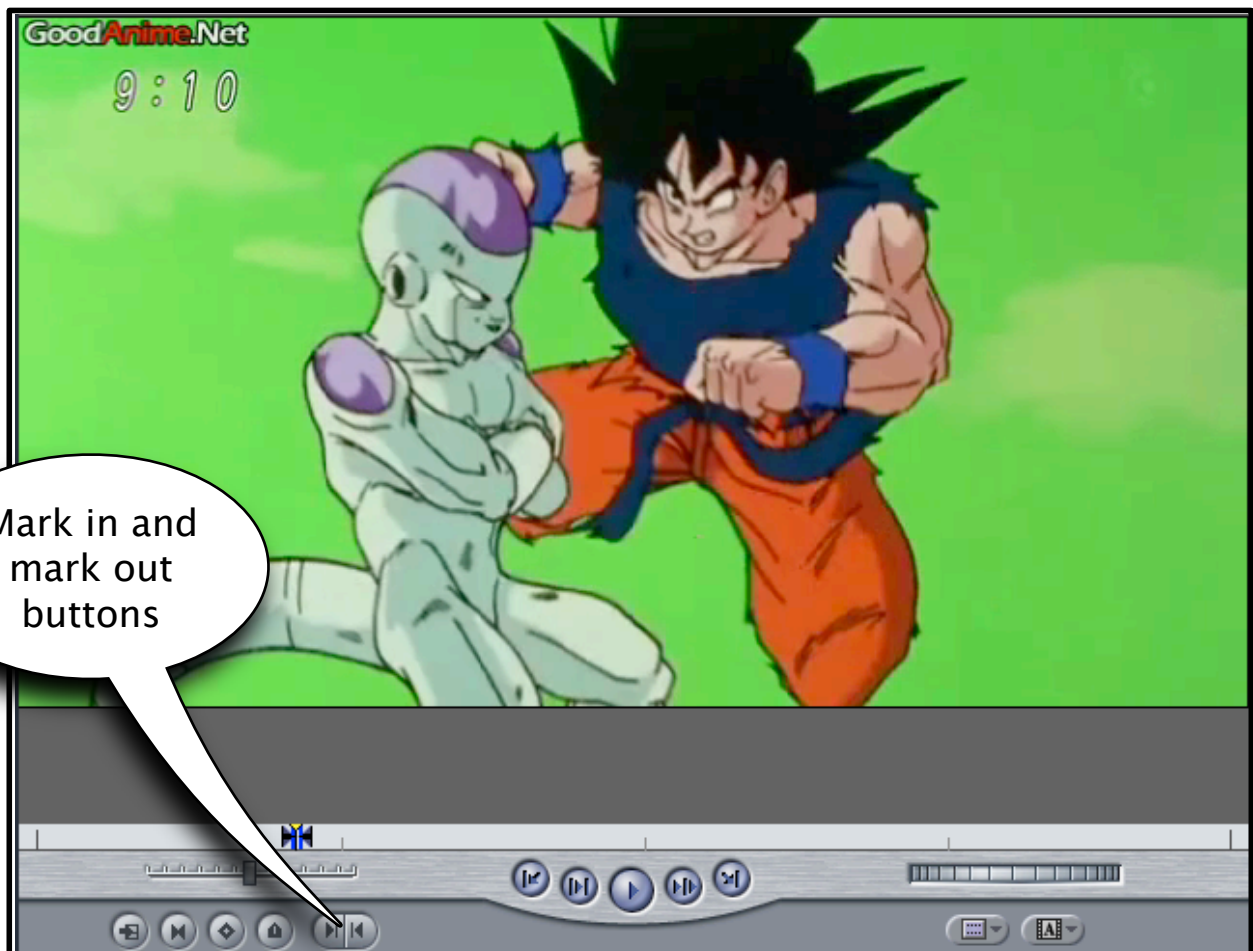
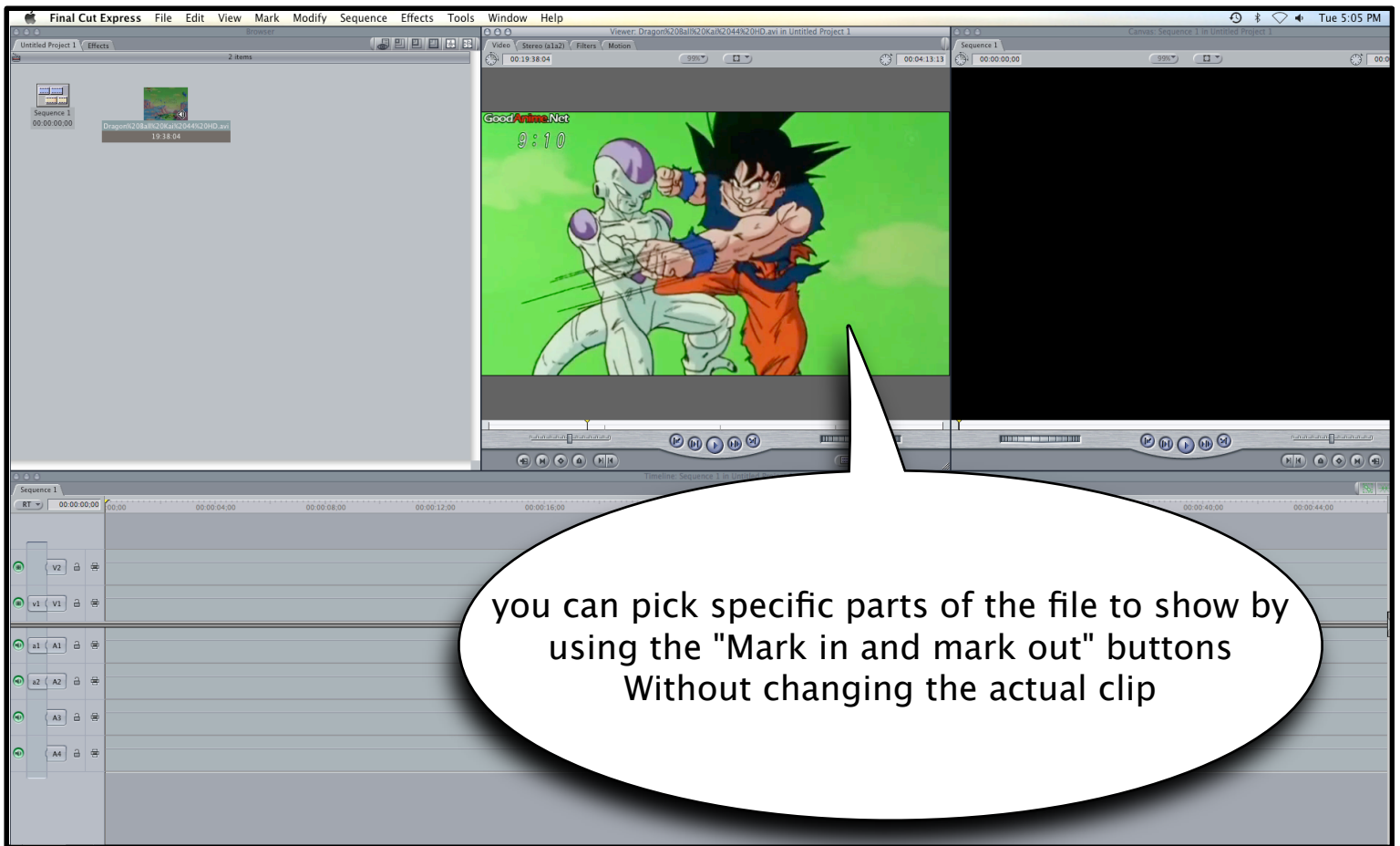
Locate the file and click "Choose"

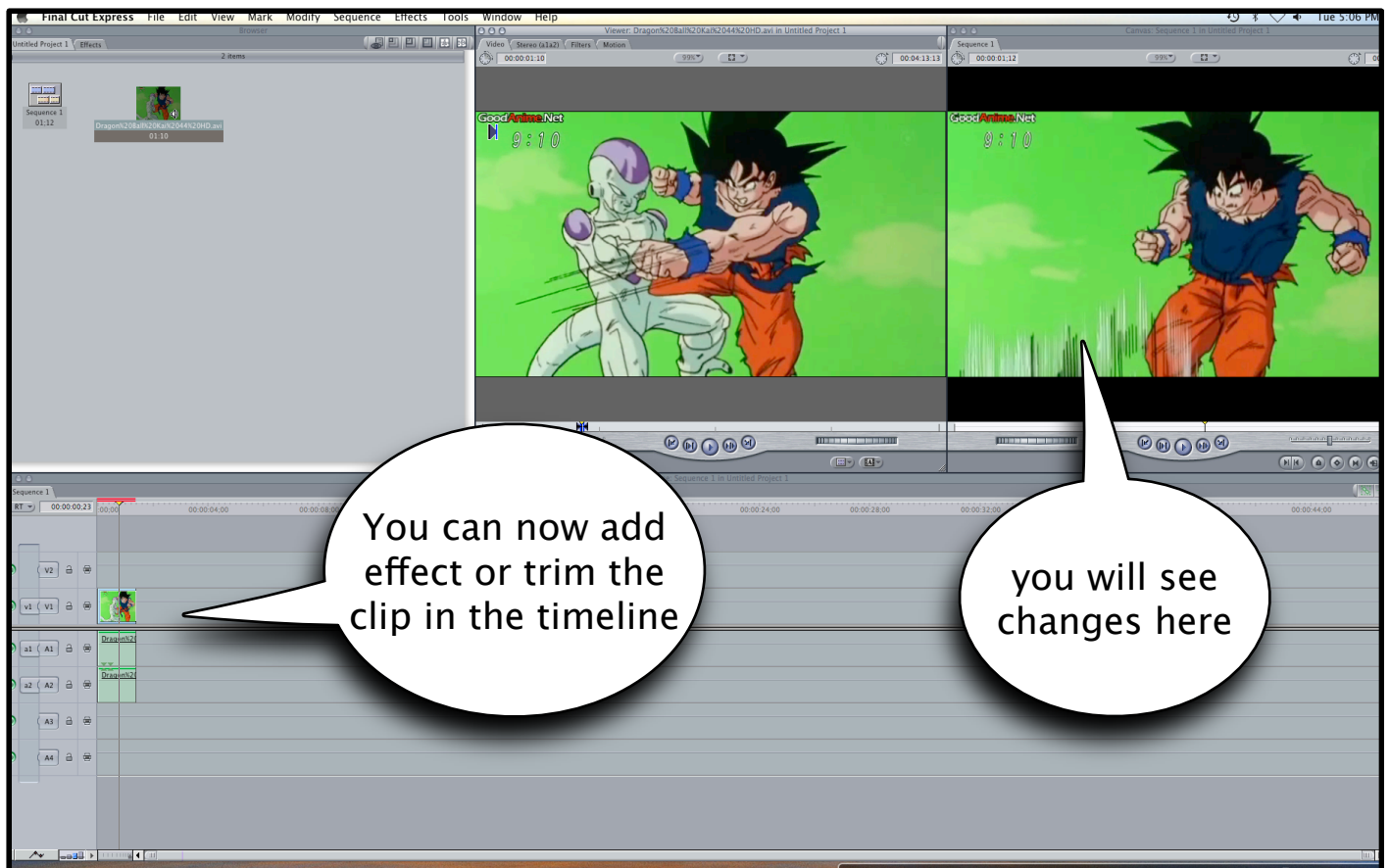
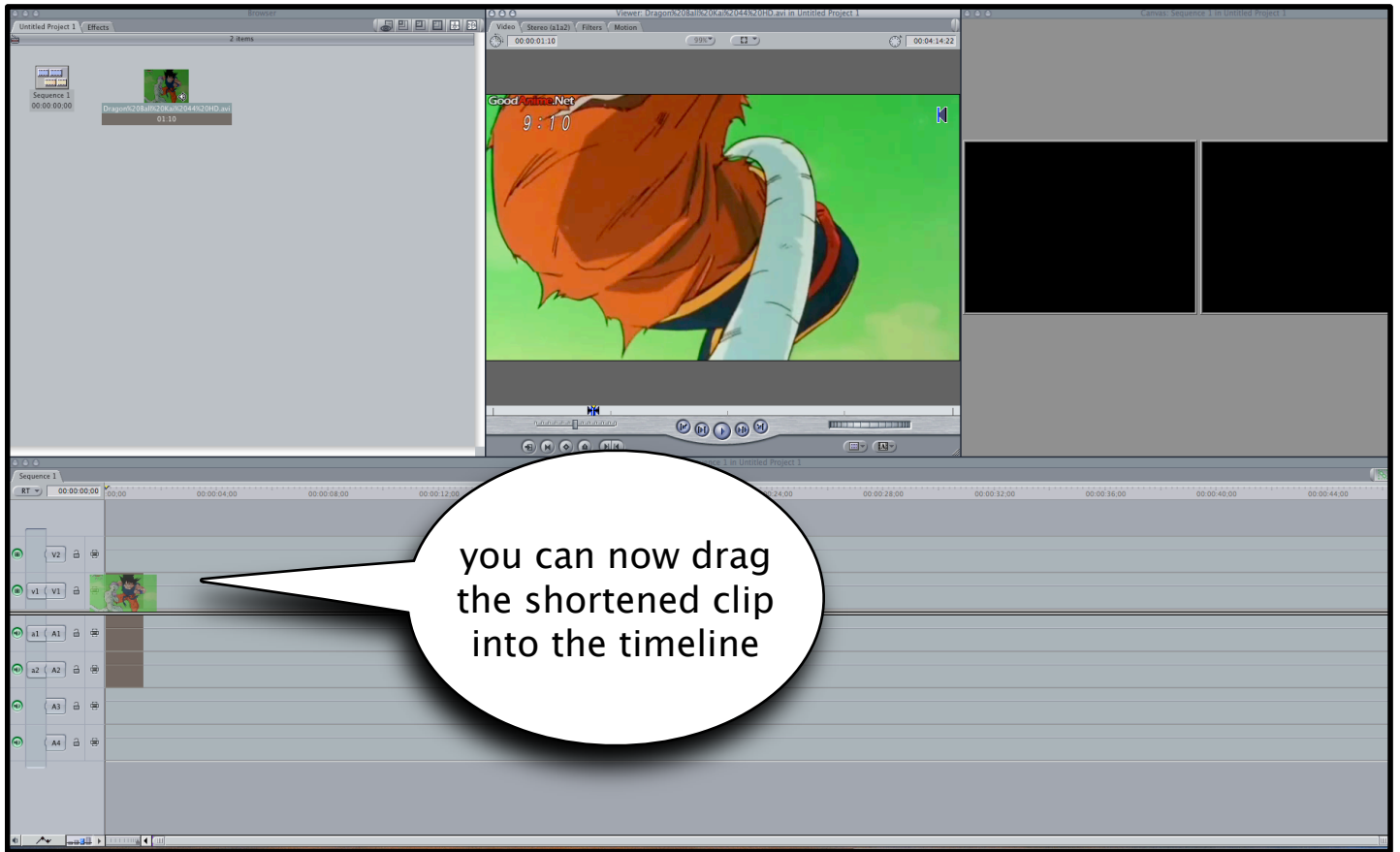


It will appear in the browser window

EDITING CLIPS

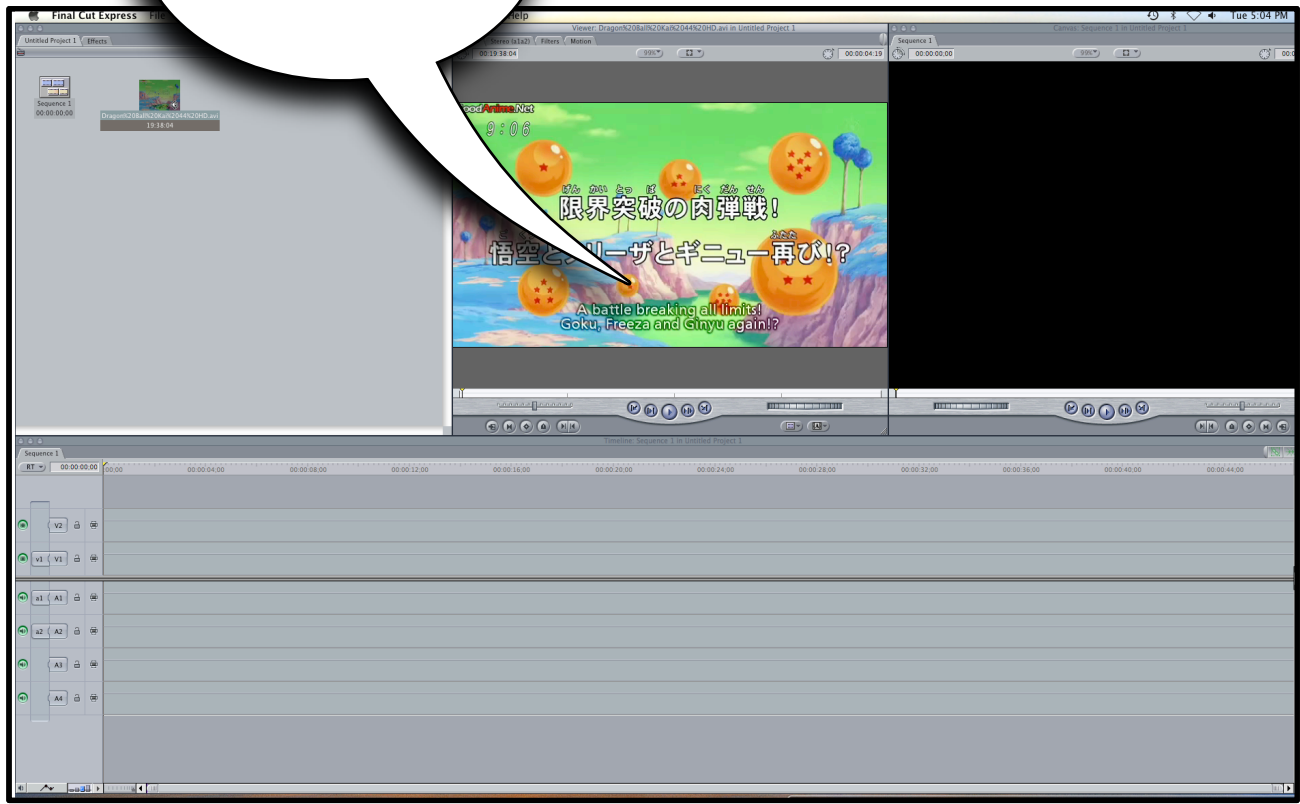


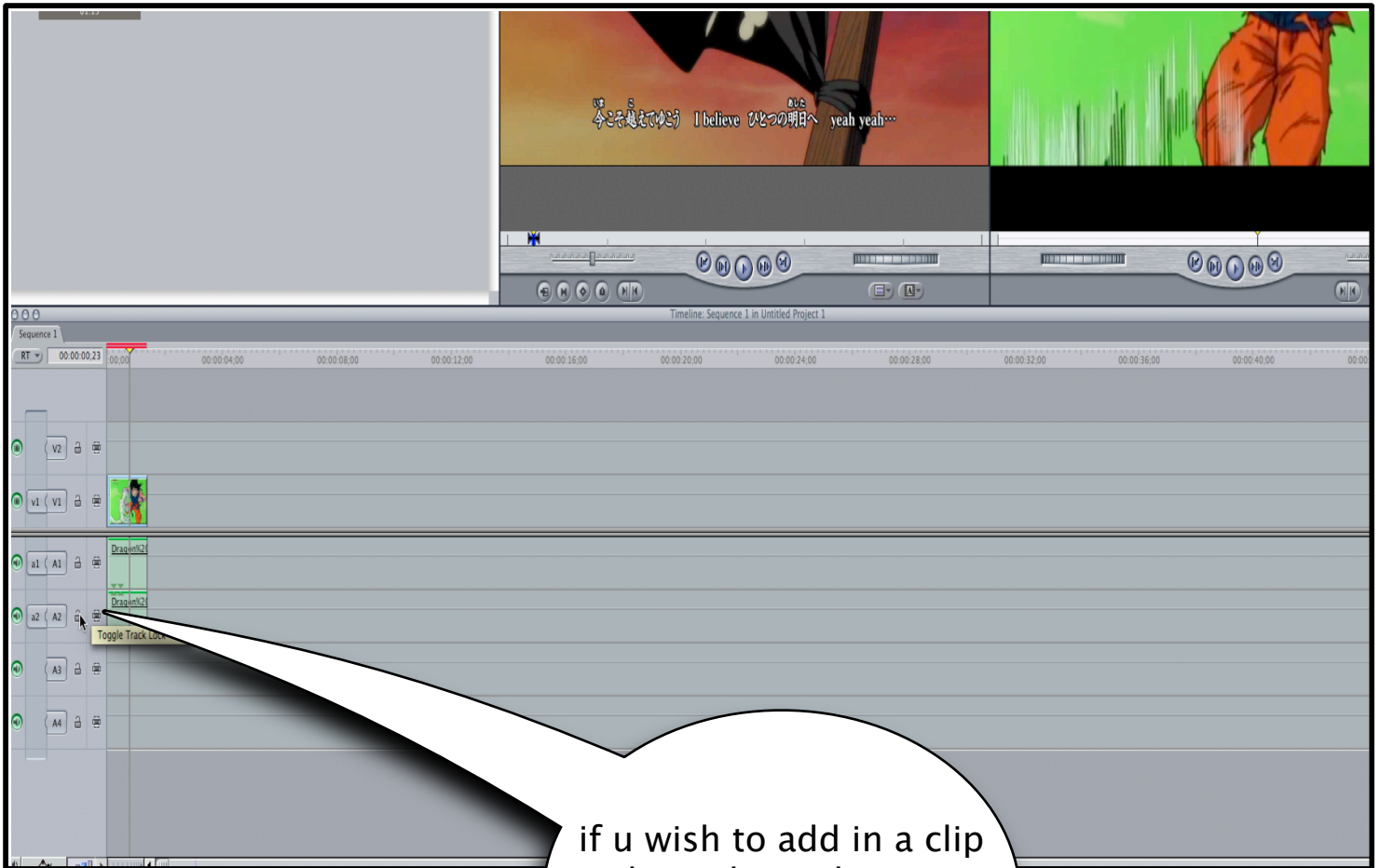




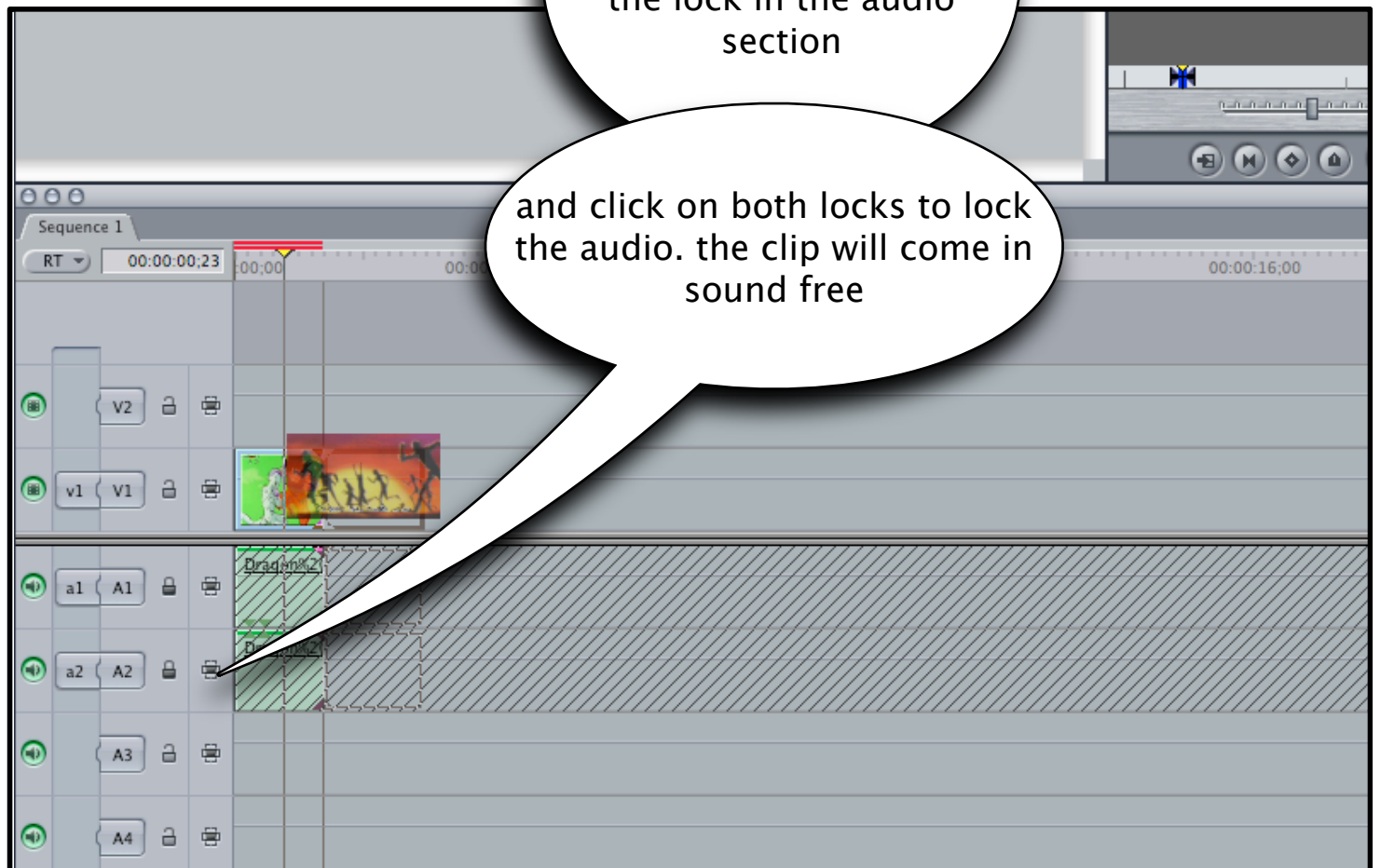


you will revert the main clip back to its original form

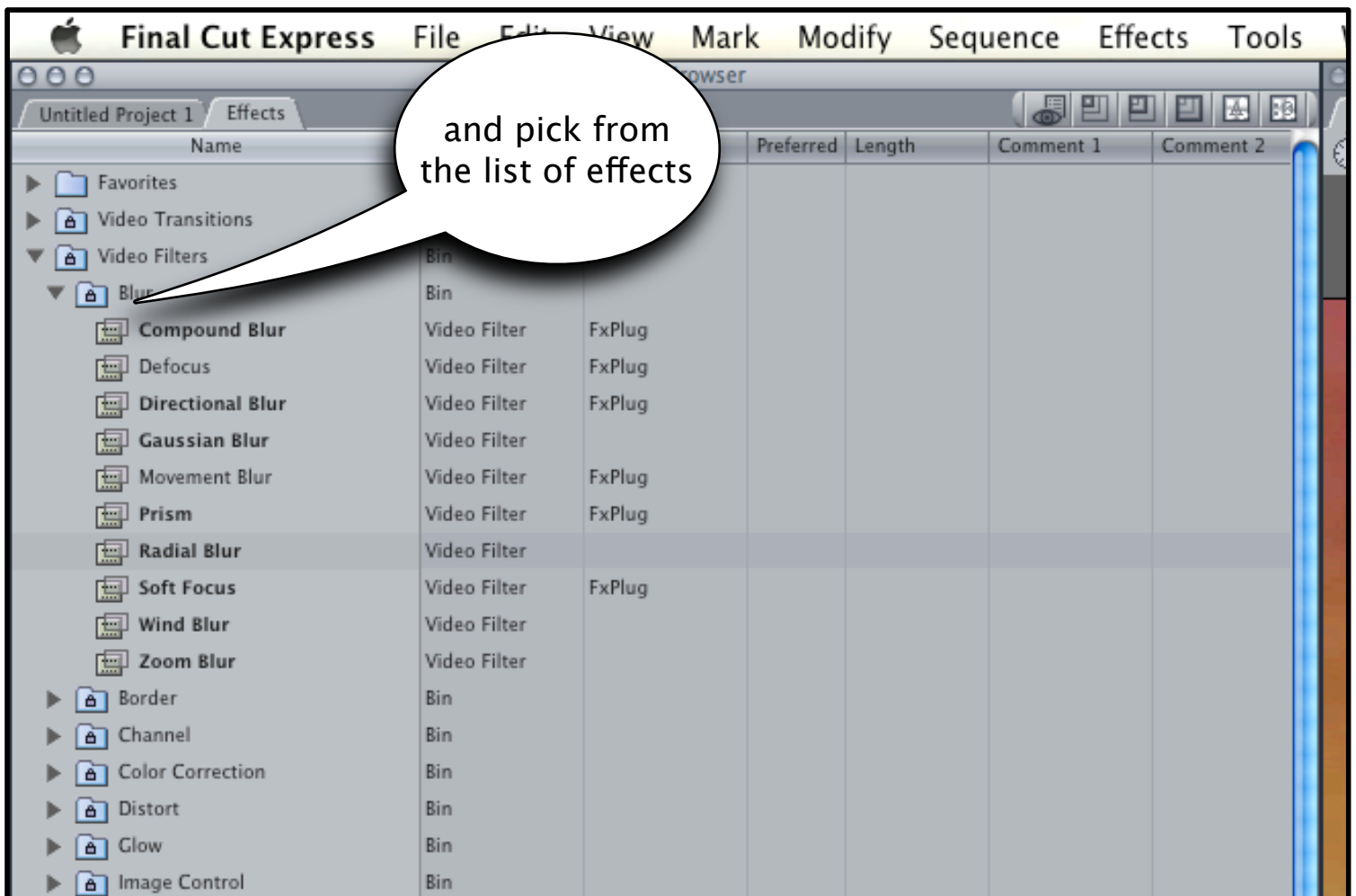
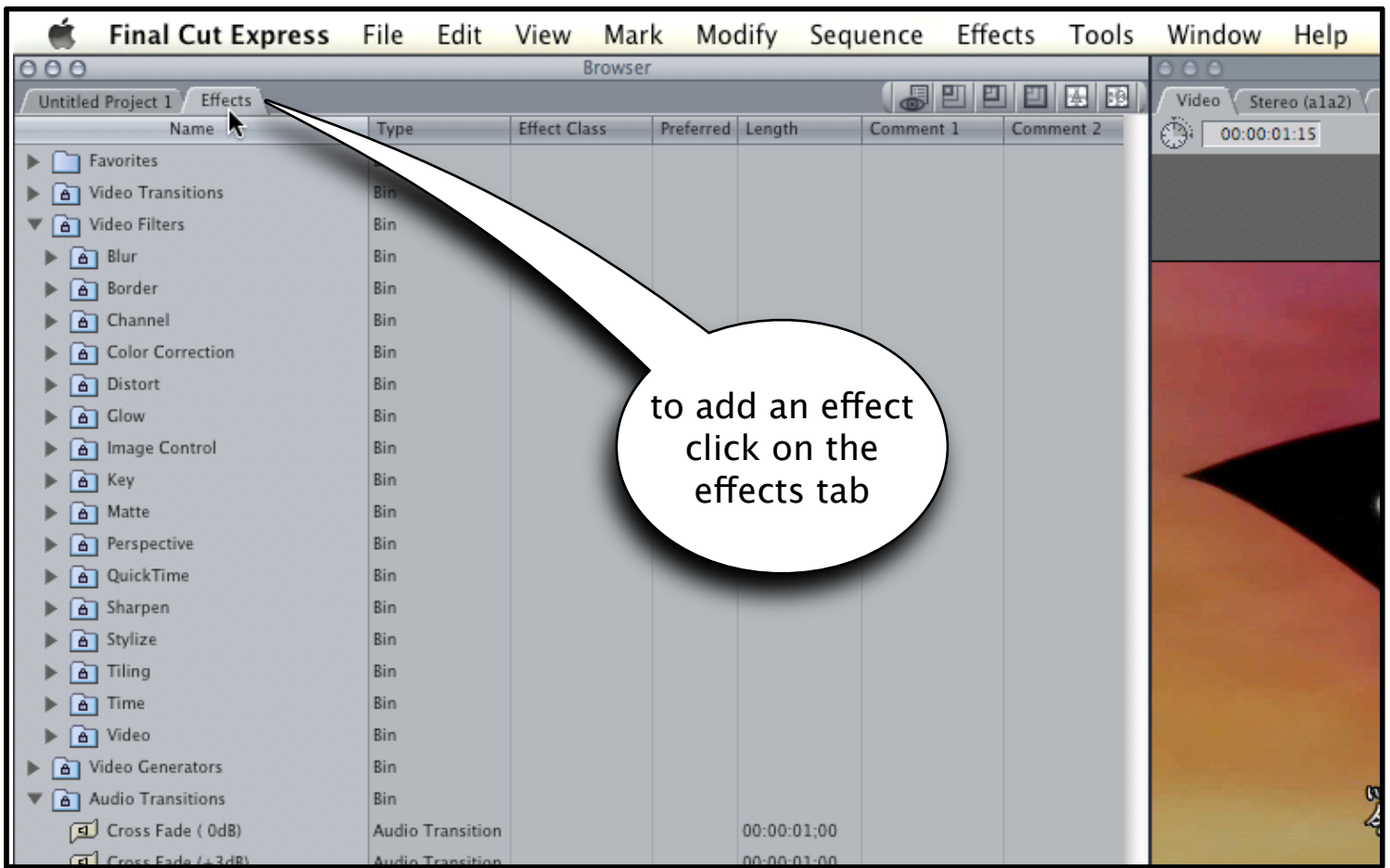


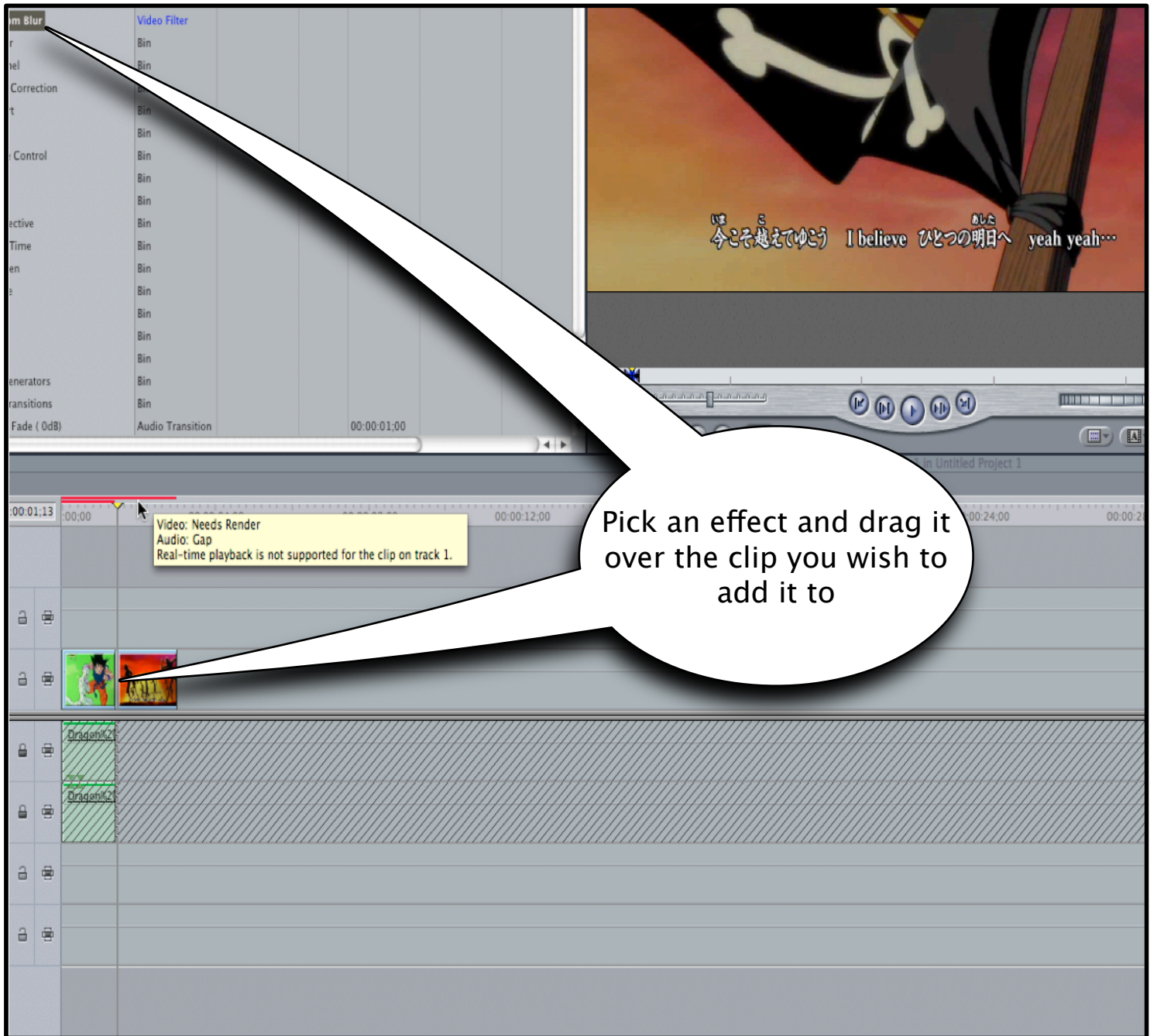


if u wish to add in a clip without the audio, go to the lock in the audio section



and click on both locks to lock the audio. the clip will come in sound free





Pick an effect and drag it over the clip you wish to add it to

