

# HOW TO USE A FLIP CAMERA

# TYPES OF FLIP CAMS



HIGH QUALITY



NORMAL QUALITY



OLD VERSION

NOTE: the video output from the three types of cameras have different resolution



# HOW TO CHANGE THE BATTERY



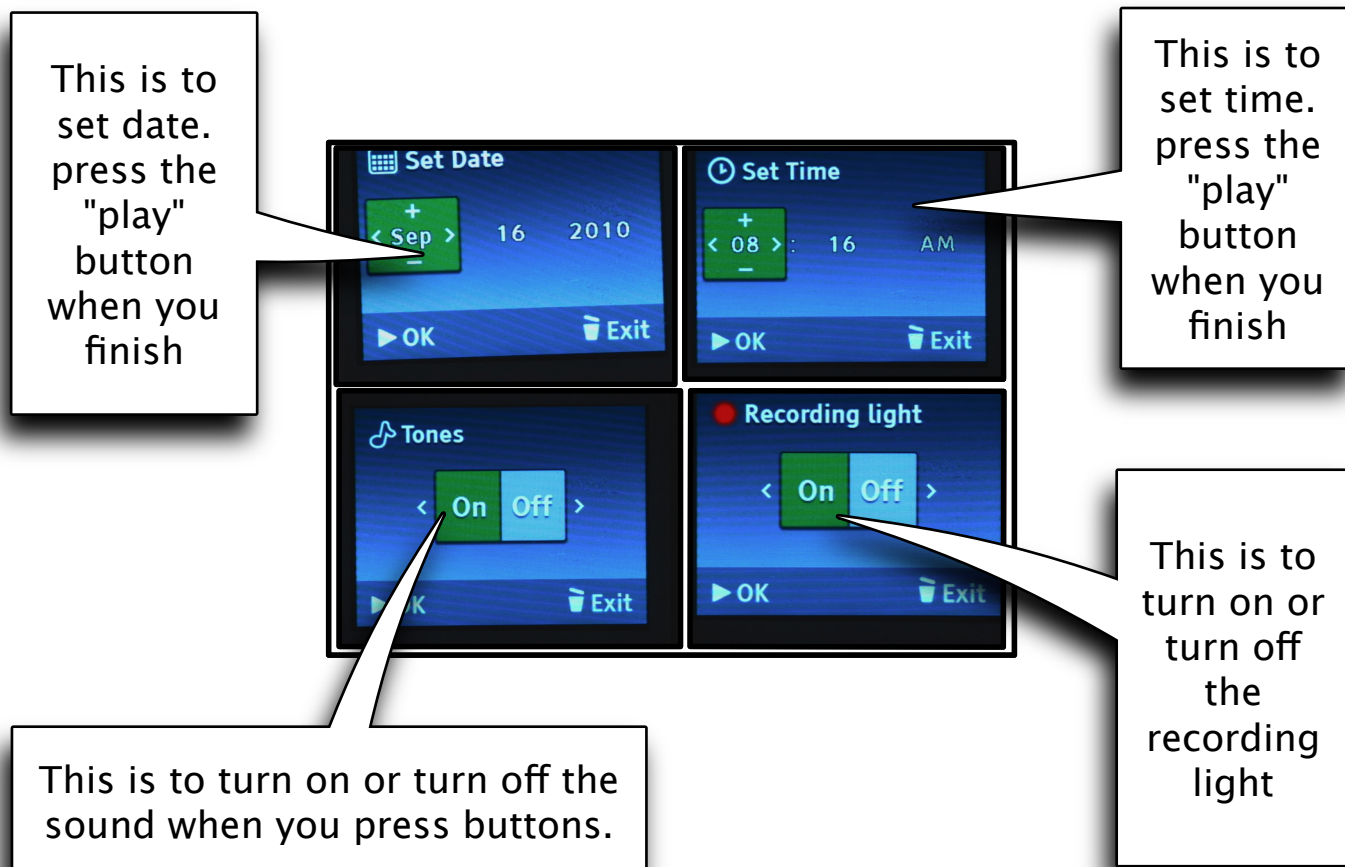
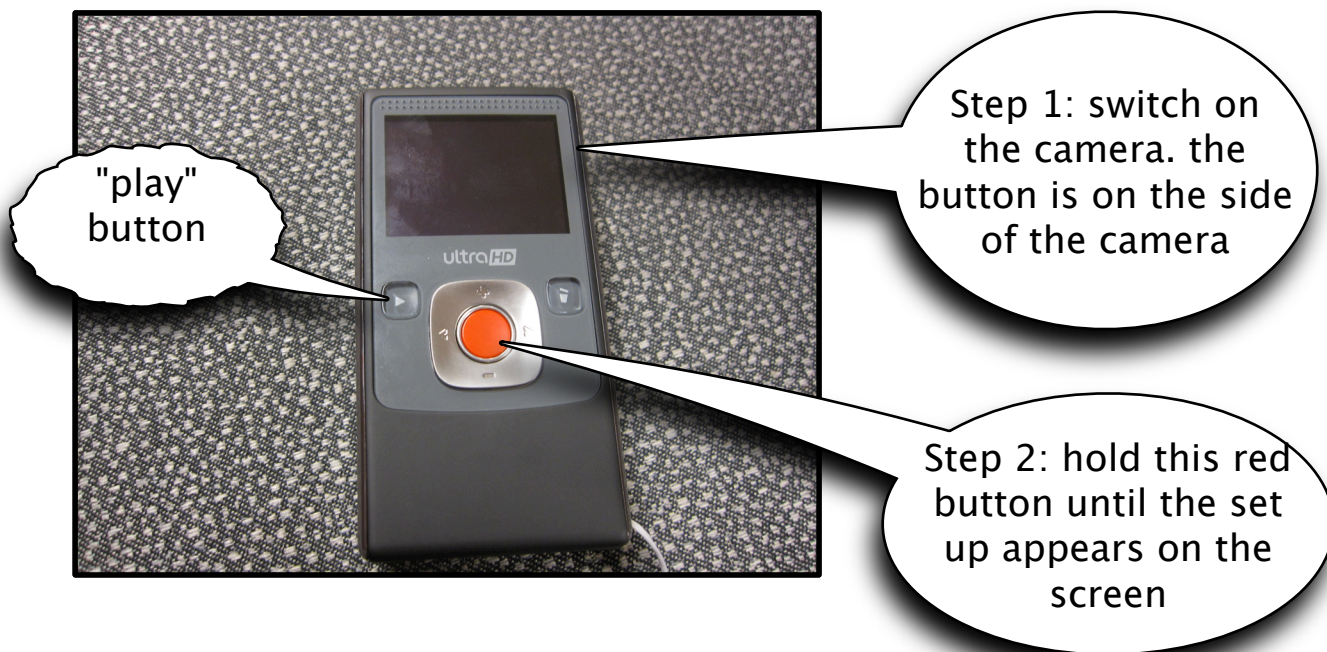
Unlock the switch  
on the bottom of  
the camera



Then flip it over  
and take out the  
cover at the back

NOTE: do not throw the  
battery away

# HOW TO ACCESS SET UP





# HOW TO RECORD, PLAY AND DELETE VIDEOS

Press the "play" button to play the video clip

After turning on the camera, press the red button to record. Press it again to stop recording

Press the delete button to delete video clip



Press up and down button to zoom in and out

Press left and right button to change video clips

# to connect to a computer



Slide the switch down to extend the USB connection on the side

the Flip can then be connected to a USB port

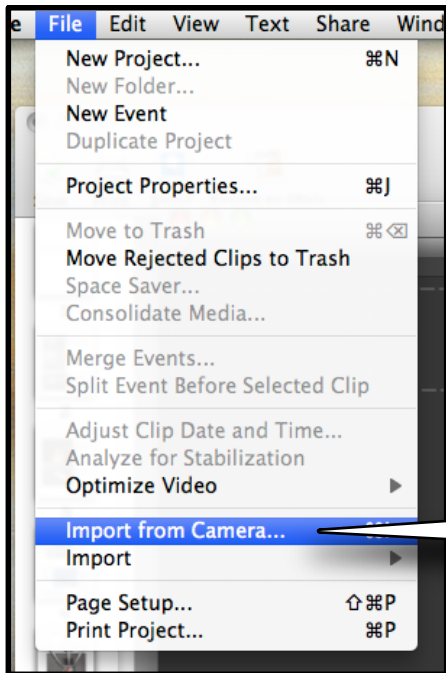


The Flip should then show up as a drive on the desktop. It will also be accessible from the Finder





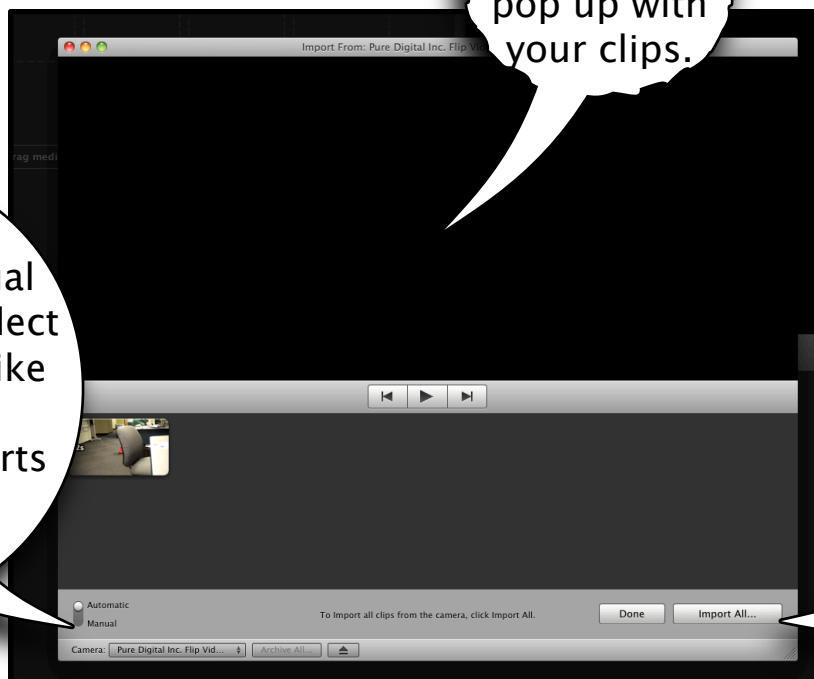
# IMPORT CLIPS TO iMOVIE



To import movies from Flip to iMovie, connect the Flip and select import from camera

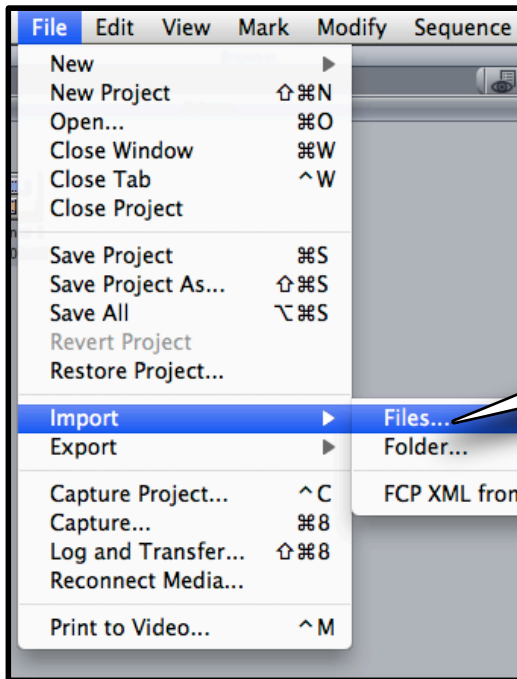
An import window will pop up with your clips.

selecting manual allows you to select the clips you'd like to import, automatic imports all



select import when you have chosen the clips.

# IMPORT CLIPS TO FINAL CUT EXPRESS



Open Final Cut Express with the Flip connected, then select File > Import > Files... to import specific clips, or select File > Import > Folder... to import all clips

a Finder window will pop up

Select Flip under devices

Videos in the Flip are stored in the folder DCIM, select this folder

If you are importing a Folder, select 100VIDEO and import

If you are importing Files, open 100VIDEO and select clips to import.

