

Dickinson College Farm CSA FAQs 2024

MEMBERS PICKING UP ON CAMPUS
FRIDAYS THE LOCATION IS PROJECT SHARE
TUESDAYS CAMPUS LOCATION IS TBD

WHERE DO I PICK UP MY SHARE ON CAMPUS?

FRIDAY PICK UPS: The pickup is located at Project SHARE. The address of the building is 5 N. Orange St, Carlisle, PA. This is the same large warehouse building that houses Dickinson's Facilities Management and Central Pennsylvania Youth Ballet (CPYB).



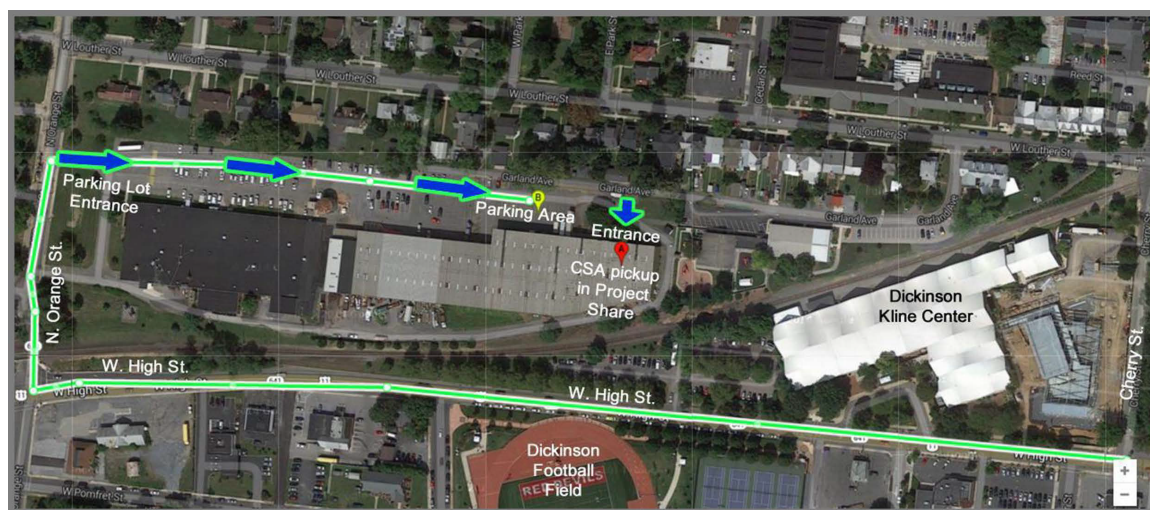
We are grateful to the staff at Project Share for loaning us a corner of their warehouse for CSA pickups. **The CSA pickup will start at 12 noon and conclude promptly at 5:30 PM.** Please plan accordingly. Thank you!

TUESDAY PICK UPS: This new option in 2024 is still being confirmed. We are identifying a location that will be on the main campus with access to parking. More soon!

HOW DOES PICK-UP WORK?

FRIDAY PICK UPS: WHEN YOU ARRIVE AT PROJECT S.H.A.R.E

Park in the parking lot and enter Project SHARE through the main entrance. Once inside, locate the crate with your name on it and transfer the produce into your bag or box that you brought. Follow the signage to stack the empty crate. Please do not remove the crate from Project SHARE.



TUESDAY PICK UPS: ON CAMPUS More details coming soon!

TUESDAYS FOR MEMBERS PICKING UP AT THE FARM

WHERE IS THE FARM?

The Dickinson College Farm is located at 553 Park Drive, Boiling Springs, PA. Look for two red barns. Detailed directions on page 5.

WHEN SHOULD I PICK UP MY SHARE?

All pick up locations will be open for business between 12:00 Noon and 5:30 PM.

WHAT HAPPENS TO MY SHARE IF I FORGET TO PICK IT UP?

Your share will be donated or shared with farm staff.

WILL I GET A REMINDER TO PICK UP MY SHARE?

YES! Harvie Happenings is a great newsletter that is emailed to you every week to remind you to customize your share and to pick up on Friday. It is the main way the College Farm communicates with CSA members. It also contains weekly updates from members of the Farm team, announcements, recipes and links to reschedule your share.

WHAT IF I WILL BE OUT OF TOWN ON A PICK-UP DAY? CAN I SEND A FRIEND TO PICK UP MY SHARE?

ABSOLUTELY! We suggest sending these FAQs to your pickup friend so that they know where to go and what to do.

DO I NEED TO BRING MY OWN REUSABLE BAGS TO TAKE MY PRODUCE HOME?

YES! Please bring a bag or box to transfer your produce into to take your share home. We will not be using T-shirt bags this year.

HOW DO I RESCHEDULE A SHARE?

Rescheduling your share is easy through **Harvie**. It can be weeks in advance but it must be done at the latest the Wednesday before the Friday pickup by 3:00pm. **WE HARVEST SPECIFICALLY FOR YOU ON THE DAY BEFORE EACH PICKUP DAY SO PLEASE REMEMBER TO RESCHEDULE AS SOON AS YOU KNOW THAT THERE IS A NEED TO DO SO.** The link to reschedule a pickup is at the bottom of Harvie Happenings - Time to Customize email, "Reschedule" or you can log into our Harvie account and then click "Deliveries" and all future delivery dates and options will be there. Please view this Harvie link to assist you in [holding or rescheduling](#) your share. If you have any questions, please contact support@harvie.farm or farm@dickinson.edu and we will be happy to assist.

I FORGOT TO RESCHEDULE BY THE DEADLINE!

Understanding that life does happen, sometimes, the farm staff can intervene and make a quick change depending on the timeline so always, please contact farm@dickinson.edu asap to see what your options are.

HOW DO I CUSTOMIZE MY SHARE?

This is a two-step process. First, when you sign up for Harvie, you will be asked to fill out a "Preferences" Survey. You will be asked to rate each vegetable, herb or fruit that will be available during the CSA season on a scale from 1 to 5. "1" means "*not for me*"- you do not like it and you will never find this product in your share. "5" means you "*love it*" and you will find it in your share every time it is available. You may edit your preferences at any point in the CSA season. To do this, please familiarize yourself with the process. [Preferences](#).

The second part is to customize your share every week which we strongly encourage. This is done by **swapping**. Please see following question/answer.

CAN I SWAP ITEMS?

YES. This is how you further customize your share each week. When you receive the Harvie Happenings - Time to Customize email each week, there is a yellow "**swap items**" link directly under the harvest list. You can also swap items by going in to "My Profile". You can swap items or completely remove items from the share. Please be sure to watch the value of the share as you swap items. Go into your "Cart" located on the top right side of your computer screen. If the total share value exceeds the allowable amount associated with your CSA share size, Harvie will charge your credit card. Please view the Harvie link about [Swaps](#).

WHAT HAPPENS WHEN MY ITEMS EXCEED THE SHARE VALUE?

Your credit card on file will be charged.

CAN I BUY MEAT AND EGGS ON A WEEKLY BASIS?

Yes! Limited cuts of beef and eggs, and sometimes other tasty goods are available as "Extras". Extras are additional a la carte items you can add to your share when you customize your delivery. You will see them listed on the Happenings email of what is available this week. Please view this Harvie link about Swaps and [Extras](#).

Our full line of meat products and eggs are available for purchase at <https://dcorganicfarm.square.site/>
You can request that your meat order is tied to your CSA pick up.

WILL MEMBERS HAVE THE OPPORTUNITY TO PURCHASE BULK PRODUCE?

YES. Depending on availability, we will offer our CSA members the opportunity to purchase bulk produce such as #2 tomatoes and storage crops such as potatoes and carrots for canning/freezing for those who love to preserve the bounty. Supplies are limited and seasonal. When bulk produce becomes available, we will announce quantities and pricing in Harvie Happenings - our weekly CSA newsletter.

I AM LOOKING FORWARD TO PICK-YOUR-OWN OPPORTUNITIES AT THE FARM. HOW WILL I KNOW WHAT I CAN PICK AND WHEN?

Pick-Your-Own is a fun, engaging way to further the farm-to-table experience that a CSA offers! We love offering P-Y-O opportunities and would like to encourage all CSA members to participate. We will announce P-Y-O opportunities, including quantities and location, in Harvie Happenings - our weekly CSA newsletter. Please bring your own scissors, boxes and rubber bands to harvest flowers or herbs! Sometimes we have strawberries and corn too. We strive to have P-Y-O opportunities every year.

WHEN AND WHERE IS CARLISLE'S WEEKLY FARMERS' MARKET?

[Farmers on the Square](#) takes place every Wednesday from 3 - 7pm in front of the First Presbyterian Church near the intersection of Hanover and High streets (address is 2 N Hanover St.) Dickinson College Farm sells May – Dec. In addition to our farm fresh organic produce, the Dickinson Farm Stand sells homemade soap, canned items such as Pickles, Pickled Red Beets, Salsa and Marinara Sauce as well as Beef Jerky. Also try our freshly made pizza baked in our portable wood-fired oven.

CSA members receive a 10% discount on purchases at the Dickinson College Stand. Please be sure to announce that you are a CSA member at check out. Cash, checks and credit cards are accepted.

HOW DO I GET IN TOUCH WITH THE FARM CREW?

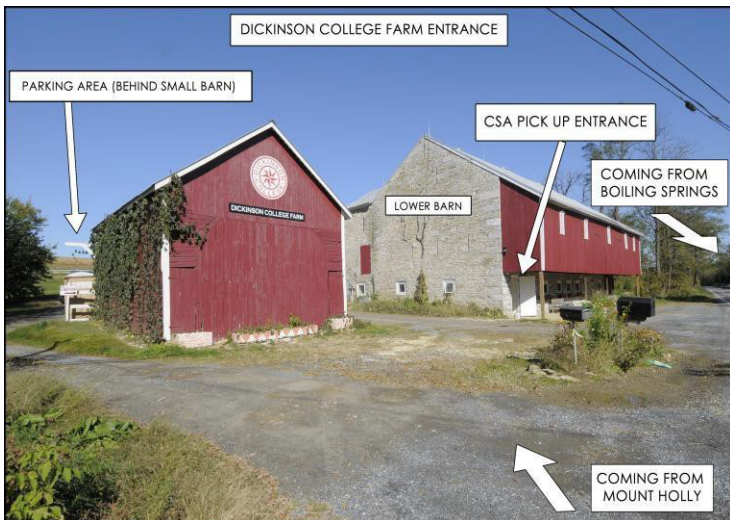
If you should ever have questions, please don't hesitate to contact farm staff at farm@dickinson.edu.



**We love it when members come out for a stroll or a picnic!
Please consider this your invitation to visit the farm this season
Monday-Saturday during working hours. The farm is closed on
Sundays. Please respect the campus COVID-19 guidelines as
they also apply at the farm**

WHERE IS THE FARM?

The Dickinson Farm is located at 553 Park Drive, Boiling Springs, PA. Look for two red barns. The smaller barn (our corn crib) has the Dickinson logo on the front.



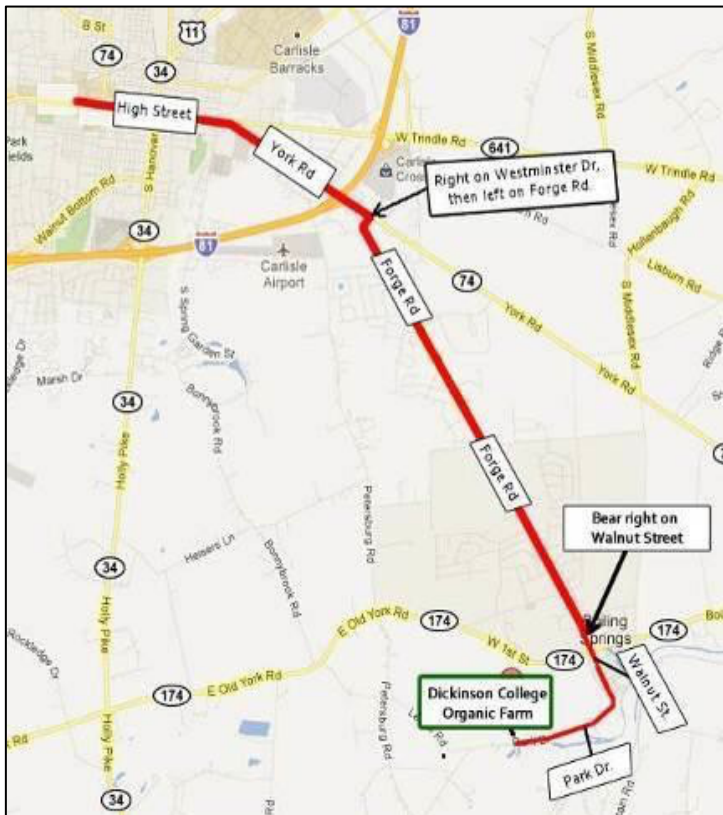
WHERE SHOULD I PARK WHEN I ARRIVE AT THE FARM?

When you arrive, park in the gravel parking area behind the small barn. Please do not park in the grass. **For safety reasons, please do not park along Park Drive in front of either barn.** This limits visibility for people who are leaving the farm. See picture to the left.

DIRECTIONS from Harrisburg

Take Interstate 81 South. Exit at High St. in Carlisle. At the end of the exit ramp, turn LEFT onto Trindle Rd. Follow to the next stoplight (Sheetz on corner) turn RIGHT and then make another immediate RIGHT into the Target shopping center. Follow the perimeter of the shopping center, exiting the area at the opposite end of the parking lot.

Continue straight at the stoplight on Westminster Ave and make a LEFT onto Forge Rd. Follow Forge Rd. for three miles into Boiling Springs. Just after the South Middleton Schools entrance, bear right on Walnut St. Go straight at the four-way stop. As you follow this street out of town around a right-hand curve, Walnut St. becomes Park Dr. The College Farm is the second farm on your right after leaving the village of Boiling Springs. Look for the red corn crib and red Dickinson barn on the right.



FROM CARLISLE Take High St. toward downtown Carlisle. Follow High St. until the road splits at Speedway Gas Station. At the High St./York St. split, take a slight right onto York St. Follow York St. past Lowes. After crossing under Route 81, turn right onto Westminster Ave., following the signs for Boiling Springs. Turn left onto Forge Rd. Follow Forge Rd. for three miles into Boiling Springs. Just after the South Middleton Schools entrance, bear right on Walnut St. Go straight at the four-way stop. As you follow this street out of town around a right-hand curve, Walnut St. becomes Park Dr. The College Farm is the second farm on your right after leaving the village of Boiling Springs. Look for the red corn crib and red Dickinson barn on the right.