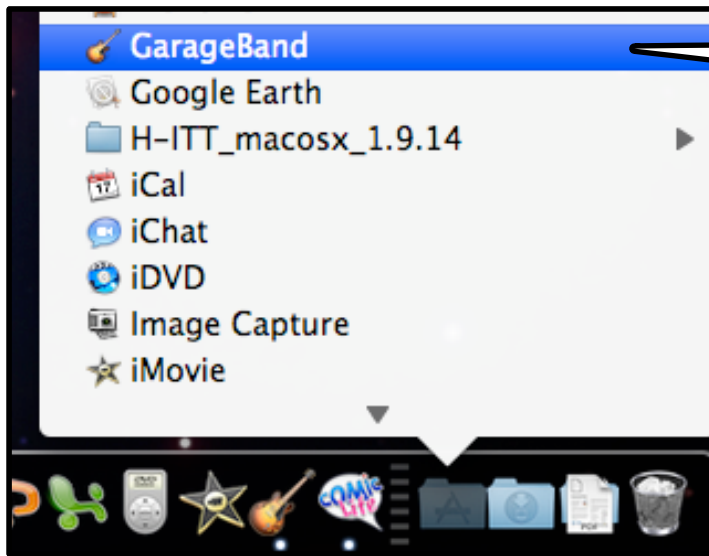


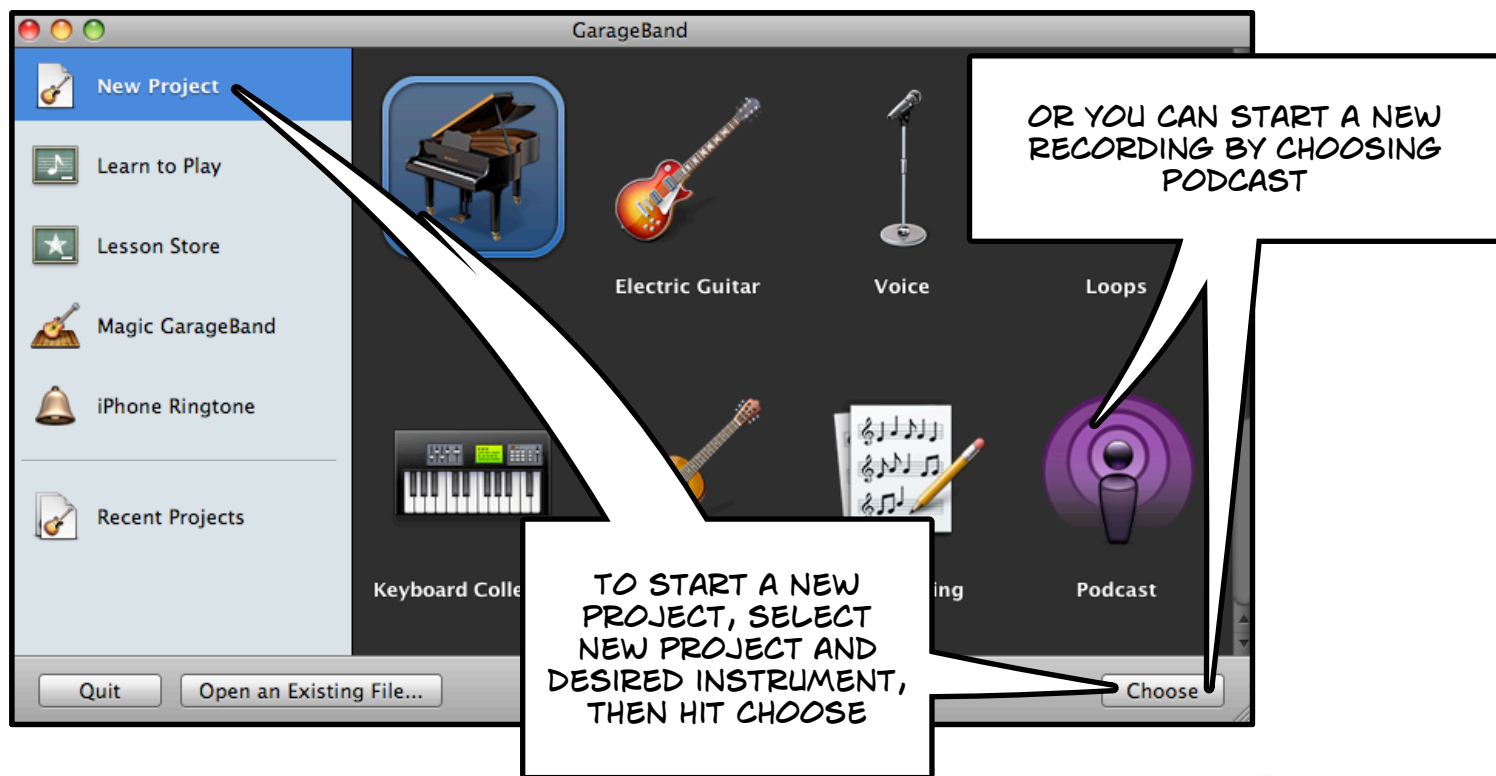
# GARAGEBAND TUTORIAL



SELECT GARAGEBAND  
FROM APPLICATION



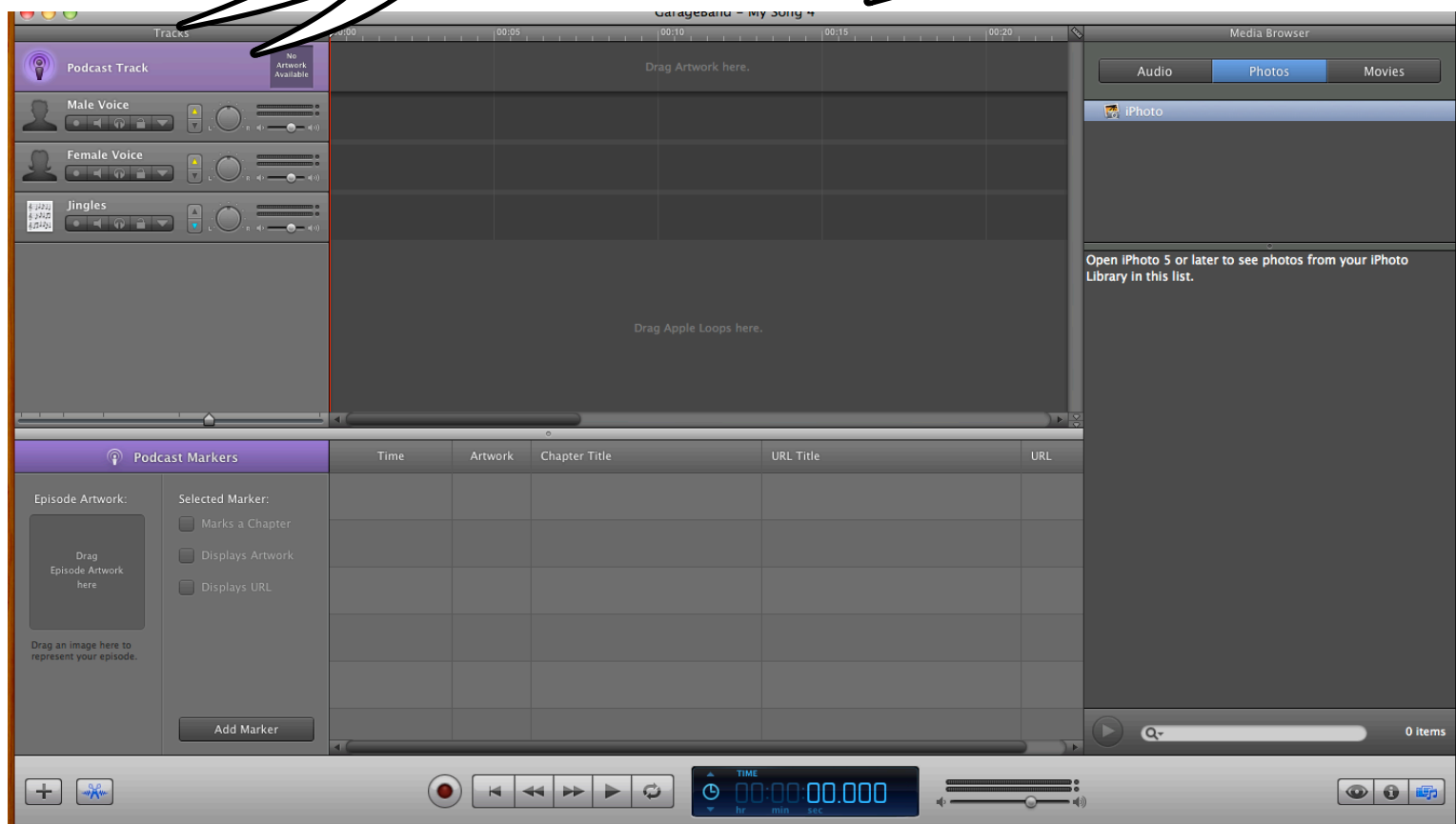
GARAGEBAND WILL OPEN IN A  
NEW WINDOW LIKE THIS



# PODCAST

IN THE "TRACKS" WINDOW, "PODCAST TRACK" IS THE DEFAULT SELECTION

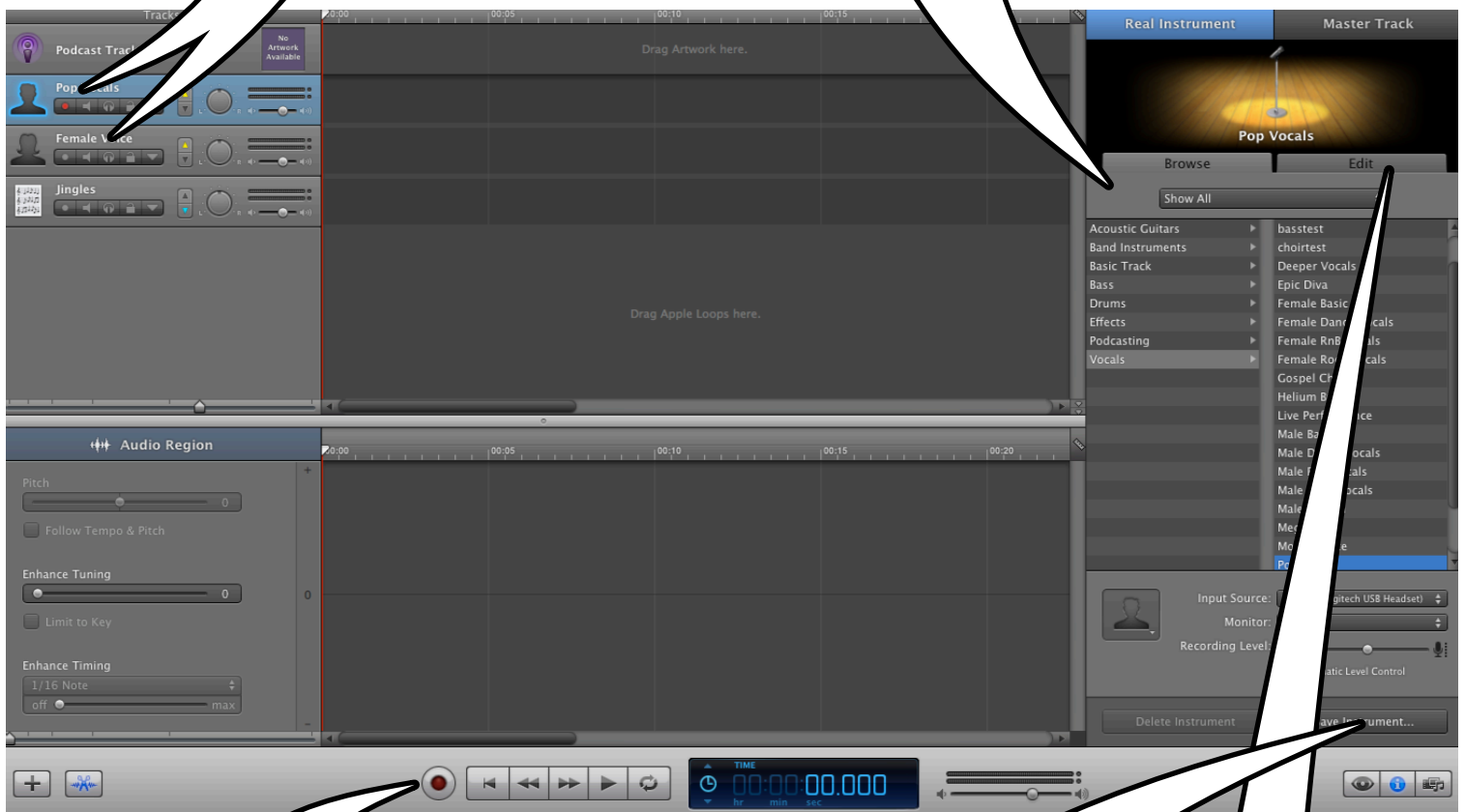
WHEN YOU OPEN PODCAST THIS SCREEN COMES UP.



# MAKING YOUR PODCAST

1.) TO BEGIN, FIRST DOUBLE CLICK YOUR RESPECTIVE VOICE, EITHER MALE OR FEMALE.

2.) TO THE RIGHT, OPTIONS TO ALTER VOCALS WILL COME UP AND LET YOU SELECT SPECIFIC OPTIONS TO EDIT YOUR AUDIO (I.E. "POPVOCALS")

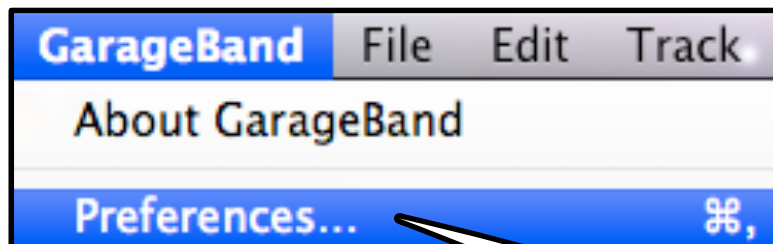


5.) WHEN YOU'VE SELECTED ALL OPTIONS YOU WISH TO, HIT THE "RECORD" BUTTON TO BEGIN RECORDING

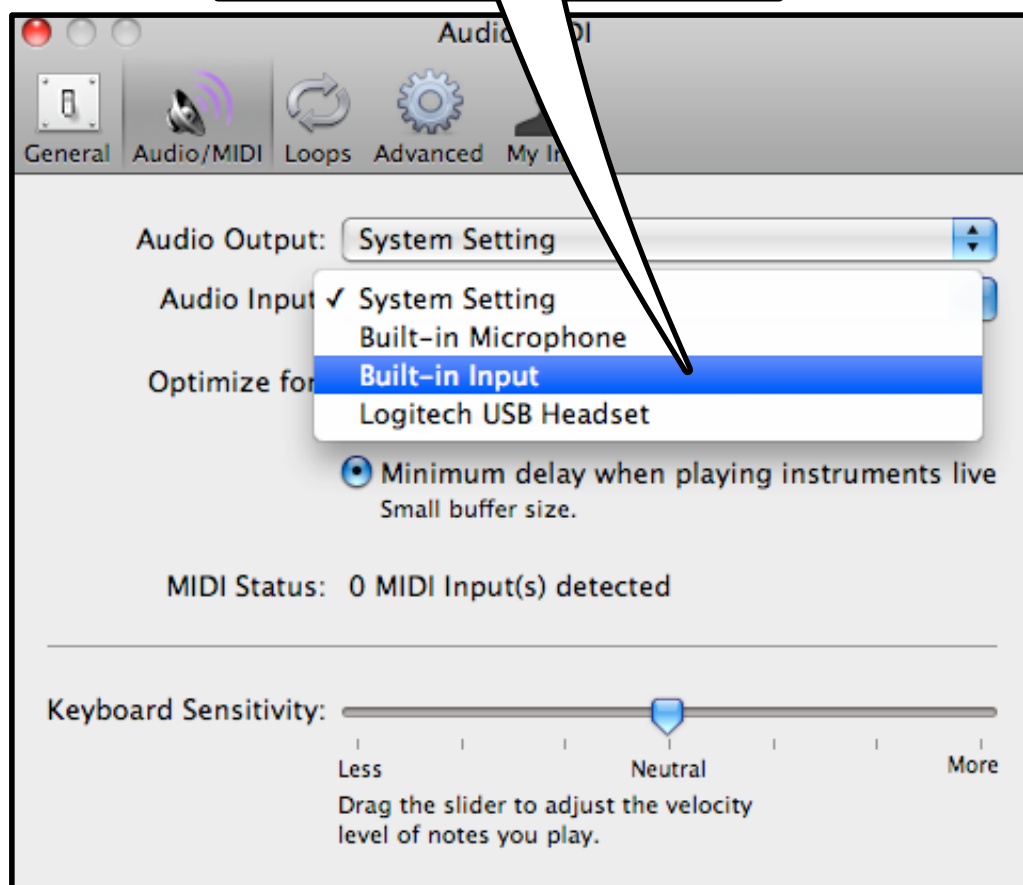
4.) WHEN YOU'VE SELECTED THE OPTIONS YOU WANT, YOU CAN SAVE YOUR NEW "INSTRUMENT", BY CLICKING "SAVE INSTRUMENT"

3.) CLICK "EDIT" TO EDIT DIFFERENT EFFECTS SUCH AS AMBIENCE, ECHO, ETC.

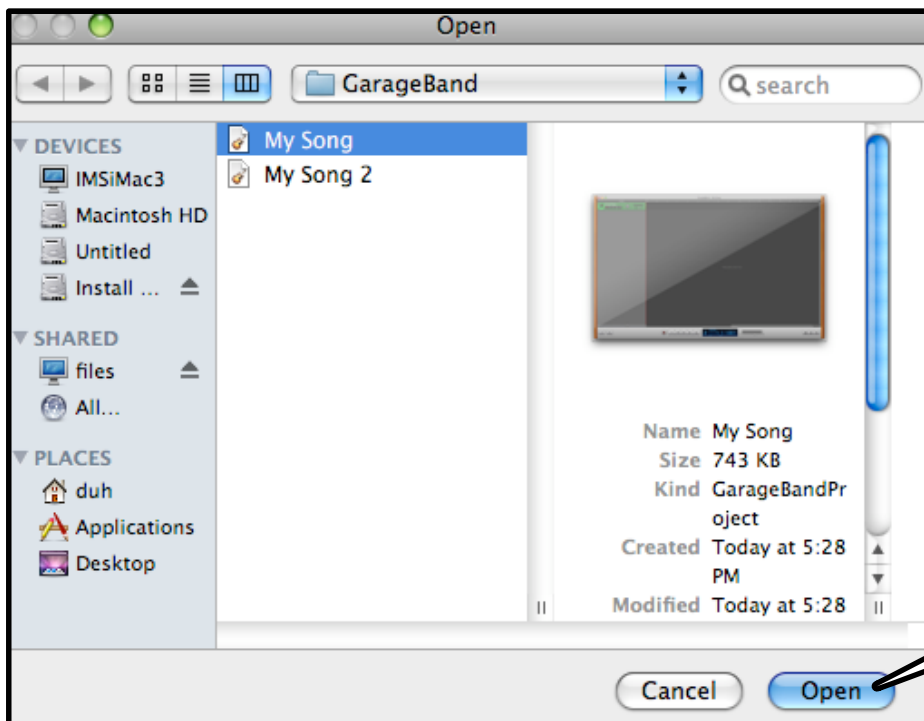
# CHANGE INPUT DEVICE



TO CHANGE YOUR DESIRED  
INPUT DEVICE, SELECT  
GARAGEBAND> PREFERENCES>  
AUDIO/MIDI> DESIRED DEVICE



# OPEN AN EXISTING FILE

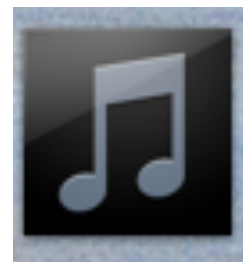


# IMPORT SOUND



TO IMPORT AN OUTSIDE MUSIC OR SOUND, SAVE THE AUDIO FILE TO YOUR DESKTOP. THEN DRAG THE FILE INTO THE BOX HERE

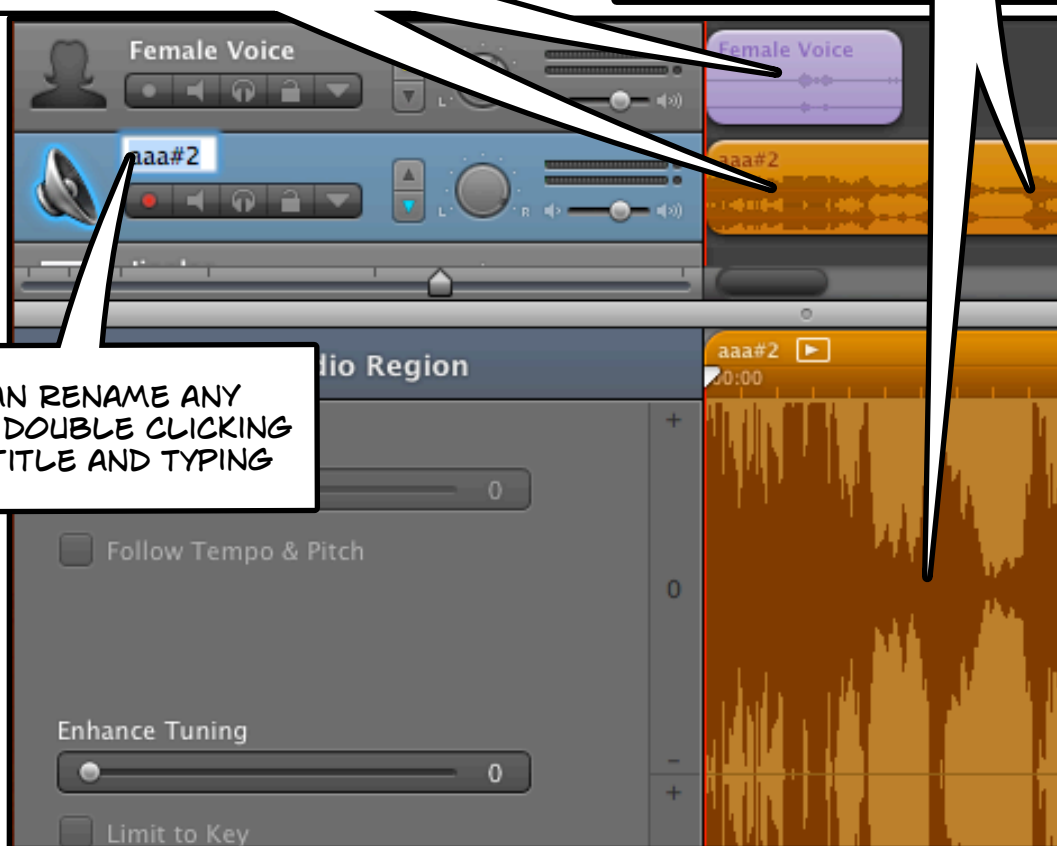
A NEW TRACK WILL BE ADDED AUTOMATICALLY



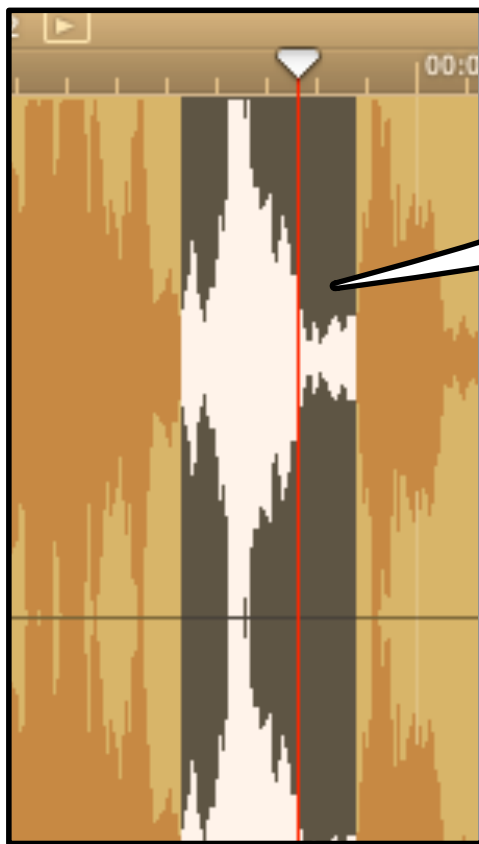
# WORKING WITH TRACKS

TRACKS ARE COLOR CODED. ORANGE WILL BE THE MP3 TRACKS AND PURPLE WILL BE YOUR VOICE RECORDINGS

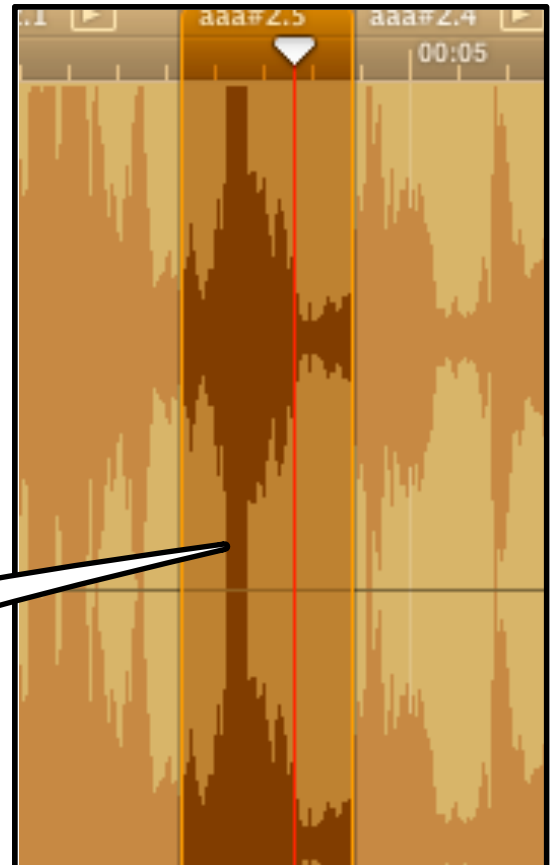
TO EDIT A TRACK, DOUBLE CLICK ON THE TRACK SO IT LOADS IN THE EDIT WINDOW ON THE BOTTOM OF THE SCREEN.



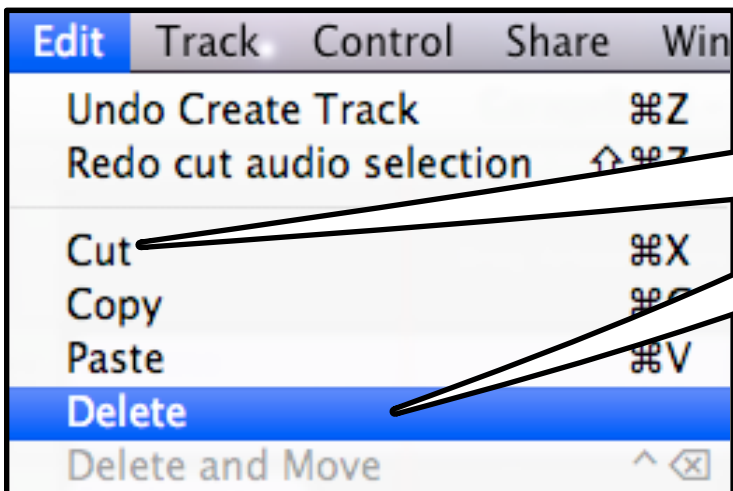
YOU CAN RENAME ANY TRACK BY DOUBLE CLICKING ON IT'S TITLE AND TYPING



HIGHLIGHT A SECTION THAT YOU WANT TO DELETE OR BREAK APART INTO A SEPARATE TRACK BY DRAGGING ON THE SECTION



DOUBLE CLICK THE SELECTED AREA TO SPLIT THE TRACK INTO MULTIPLE PARTS



YOU CAN ALSO REMOVE THE HIGHLIGHTED SECTION BY CLICKING 'EDIT> DELETE' OR CHOOSE 'EDIT> CUT' TO MOVE THE SELECTION TO ANOTHER AREA.



# ADJUST VOLUME



YOU CAN EDIT THE VOLUME ON A TRACK BY MOVING THE SLIDER UP OR DOWN

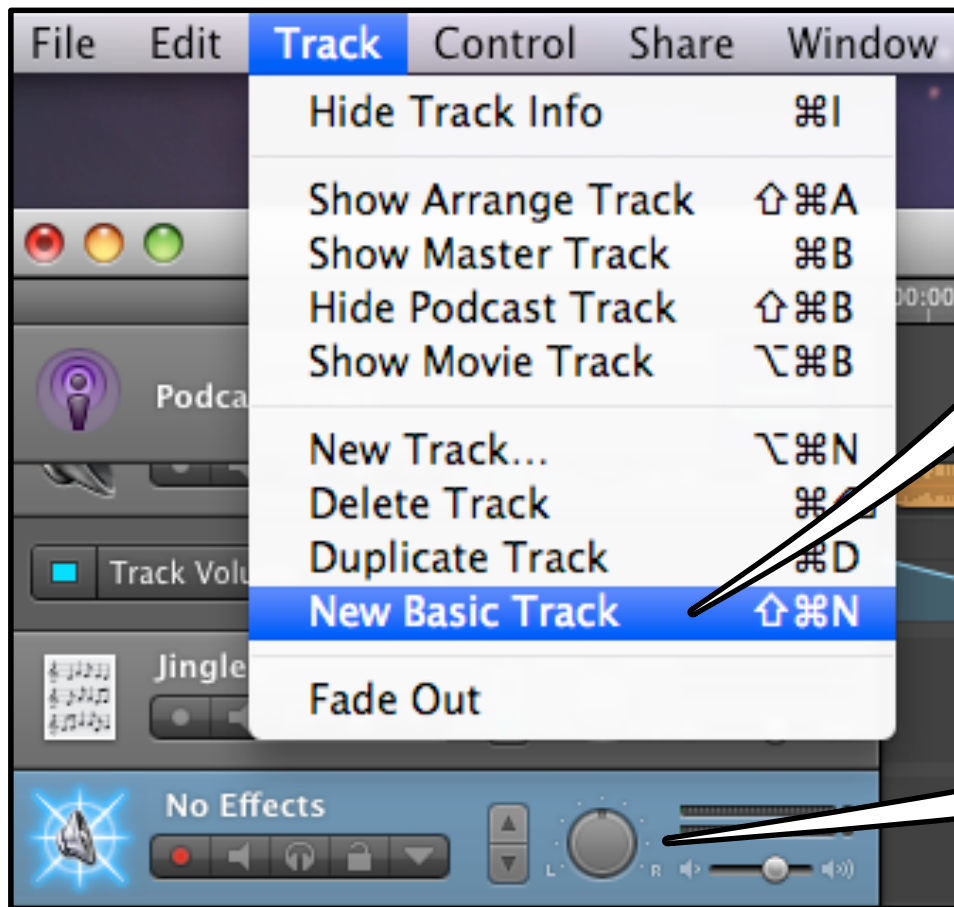


TO ADJUST THE VOLUME ON SECTIONS OF THE TRACK, CLICK THE TRIANGLE UNDER THE TITLE TO VIEW THE TRACK VOLUME AREA

CLICK THE BOX AND A NEW TRACK WILL APPEAR WHERE YOU CAN ADJUST THE VOLUME BY ADDING MARKERS SO YOU CAN INCREASE AND DECREASE THE VOLUME



# CREATE NEW TRACK



TO CREATE A NEW TRACK, GO TO TRACK > NEW BASIC TRACK

A NEW TRACK WILL APPEAR AT THE BOTTOM

# ADDING PHOTOS, VIDEOS, ETC

The screenshot shows the Audacity Podcast Producer interface. On the left, the 'Podcast Track' section contains tracks for 'Male Rock Vocals', 'Female Voice', 'aaa#2', and 'Jingles'. A callout box points to the 'Female Voice' track with the text 'SELECT YOUR TRACK'. Below this is the 'Podcast Markers' section, which includes a table for markers. The table has columns for 'Time', 'Artwork', and 'Chapter Title'. The first row shows a time of '00:00:37.375', an artwork thumbnail, and the chapter title 'Chapter Title'. To the right of the tracks is a media browser with tabs for 'Audio', 'Photos', and 'Movies'. The 'Photos' tab is selected, showing a list of photos from 'iPhoto', including 'Events', 'Photos', 'Last 12 Months', 'Last Import', and 'Flagged'. Below the list are two preview windows labeled 'Picture 1' and 'Picture 2'. At the bottom of the interface is a control bar with a '+' button, a waveform icon, a red record button, and playback controls. A callout box points to the '+' button with the text 'MAKE SURE THE TRACK EDITOR IS SELECTED'. To the right of the playback controls is a digital time display showing '00:00:03.812'. Further right is a volume slider and a '2 Items' indicator. A callout box points to the media browser area with the text 'OPEN YOUR MEDIA BROWSER'.

**Podcast Track**

No Artwork Available

Male Rock Vocals

Female Voice

aaa#2

Track Volume

Jingles

**Podcast Markers**

Episode Artwork:

Drag Episode Artwork here

Drag an image here to represent your episode.

Selected Marker:

☐ Marks a Chapter

☒ Displays Artwork

☐ Displays URL

Add Marker

Time	Artwork	Chapter Title
00:00:37.375		Chapter Title

**Audio** **Photos** Movies

iPhoto

- Events
- Photos
- Last 12 Months
- Last Import
- Flagged

Picture 1

Picture 2

2 Items

TIME 00:00:03.812

MAKE SURE THE TRACK EDITOR IS SELECTED

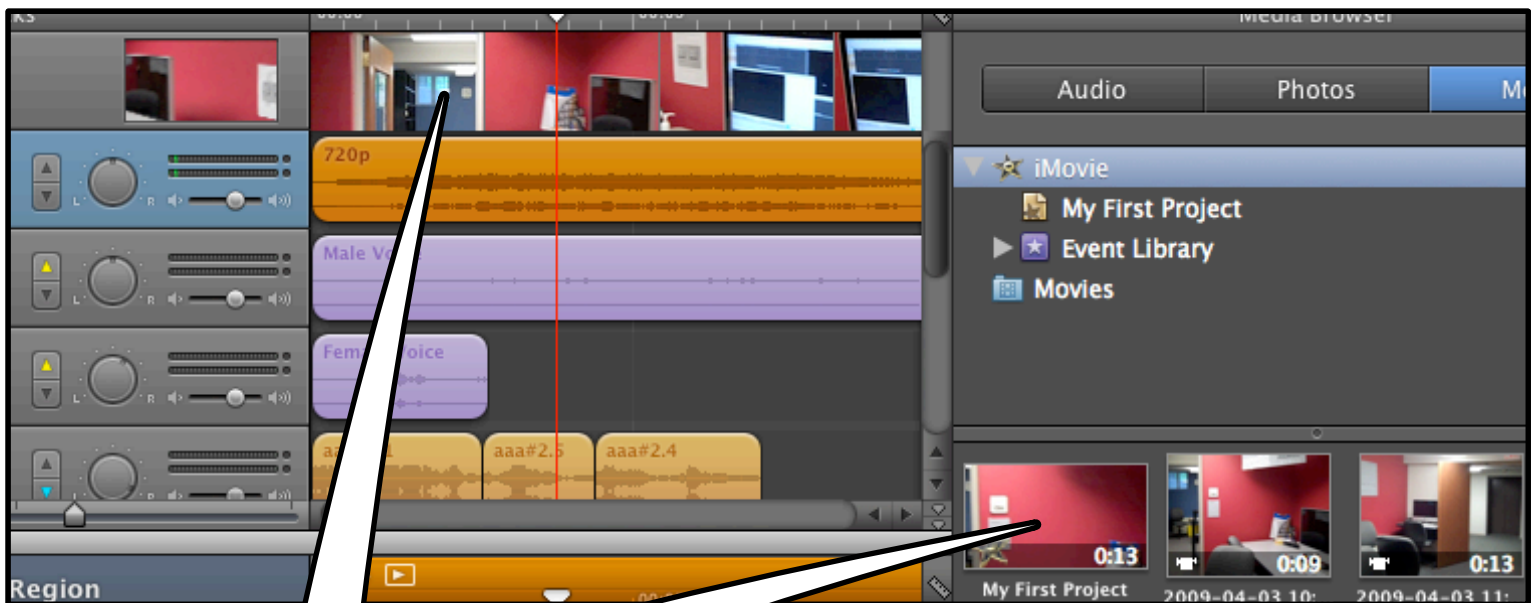
OPEN YOUR MEDIA BROWSER

DRAG AND DROP PHOTOS WHEREVER YOU LIKE THEM TO APPEAR IN YOUR TRACK



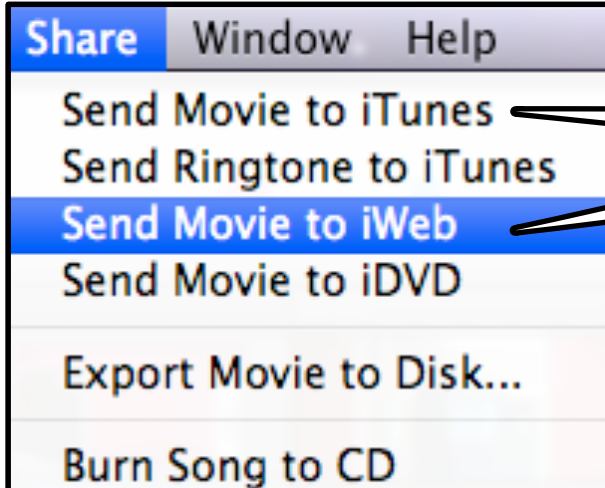
DRAG A PHOTO TO MAKE IT YOUR EPISODE ARTWORK

YOU CAN NAME THE CHAPTER OR INPUT A URL

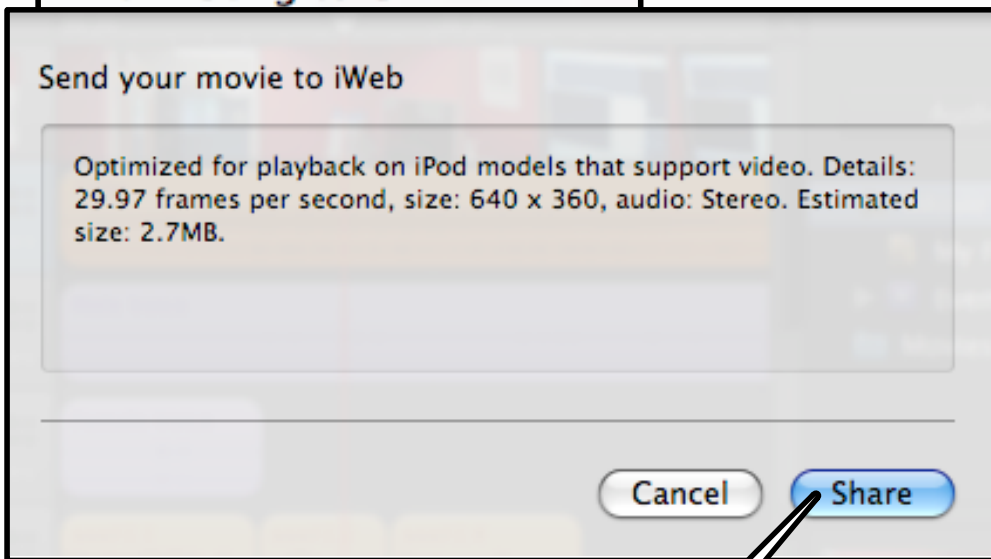


YOU CAN ALSO ADD MOVIES BY SIMPLY DRAGGING AND DROPPING IN THE TIMELINE

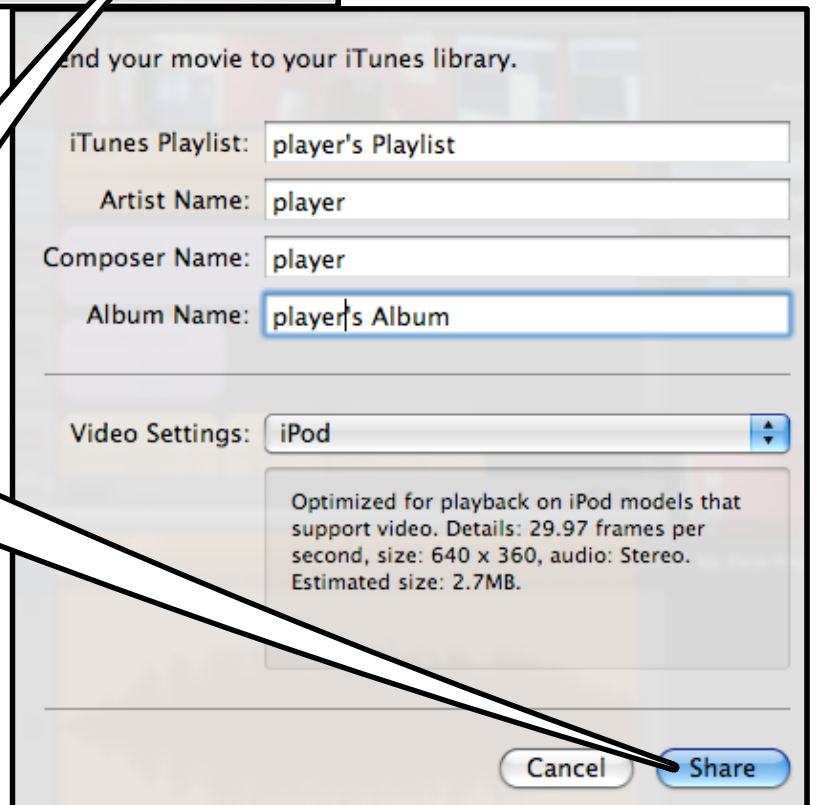
# SHARING YOUR PODCAST



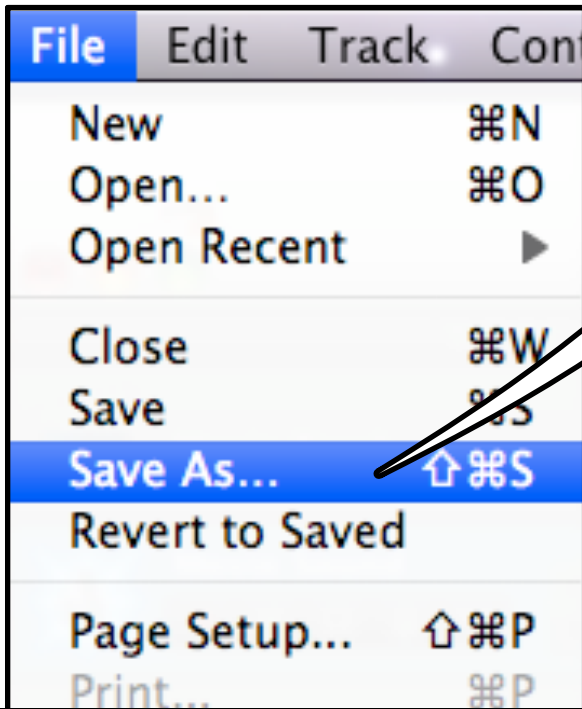
CLICK ON SHARE >  
SEND MOVIE TO IWEB  
OR ITUNES



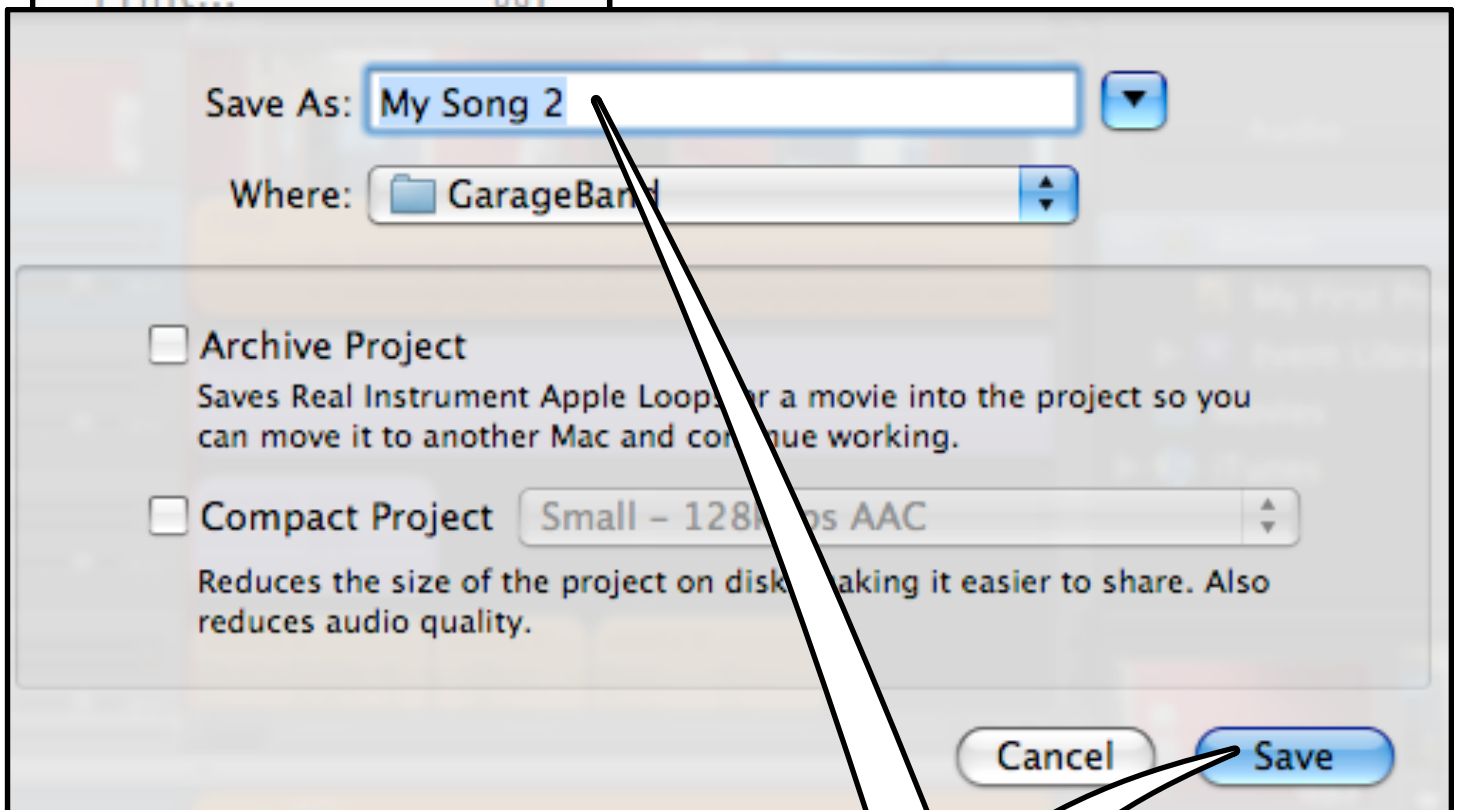
THEN PRESS  
SHARE



# SAVING



TO SAVE,  
CHOOSE  
FILE> SAVE  
AS



TITLE YOUR RECORDING  
WHEN FINISHED, SELECT SAVE