



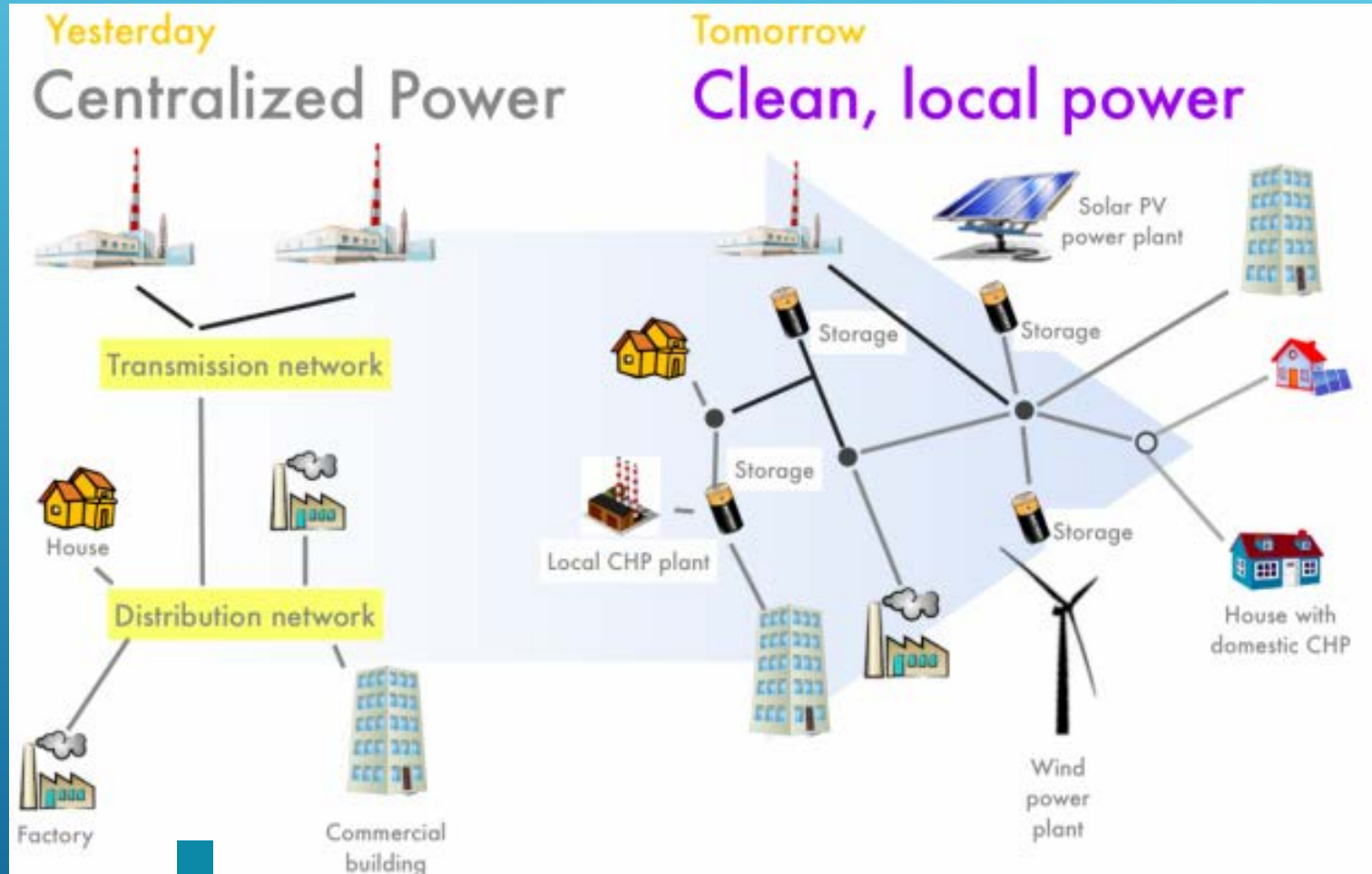
PennState

# ENERGY AND ENVIRONMENT IN THE STATE OF PENNSYLVANIA

Cristina FRASS

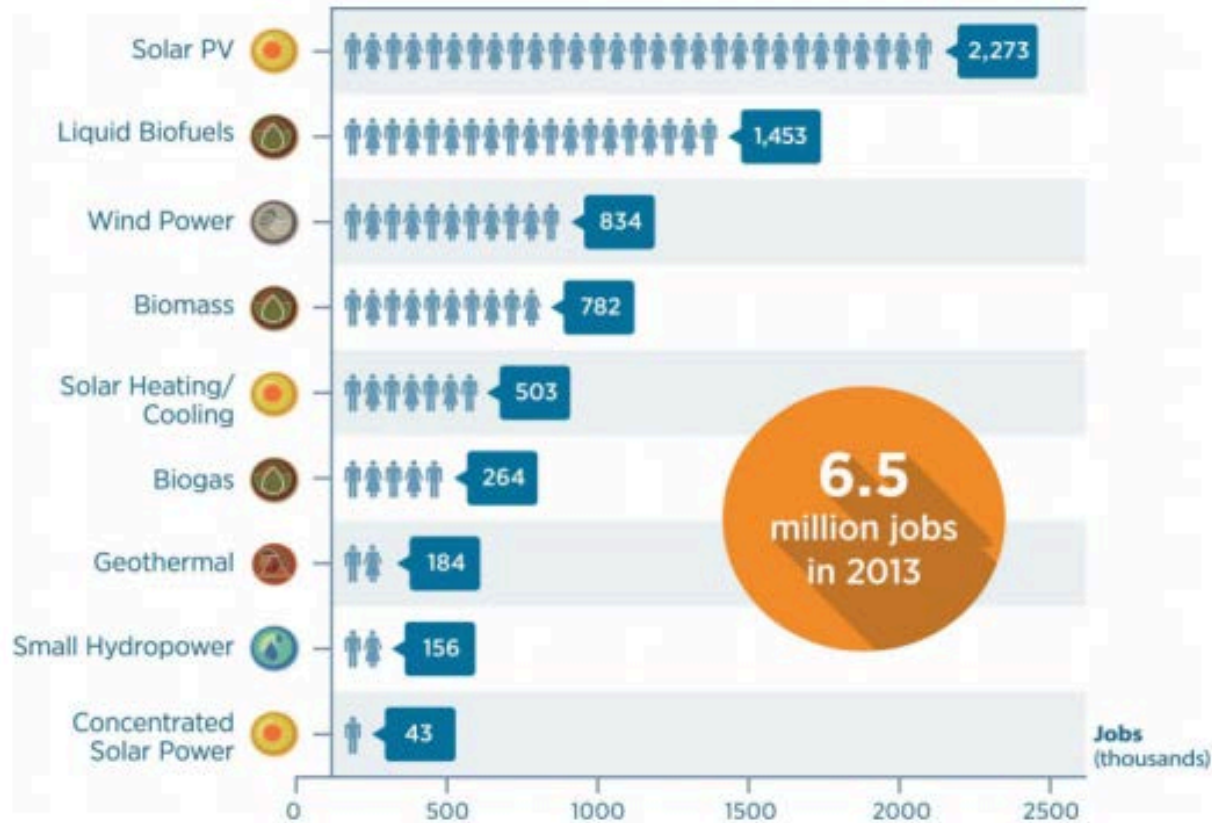
April 4<sup>th</sup> 2016

# Transition from coal-based energy sources into renewable energy sources.



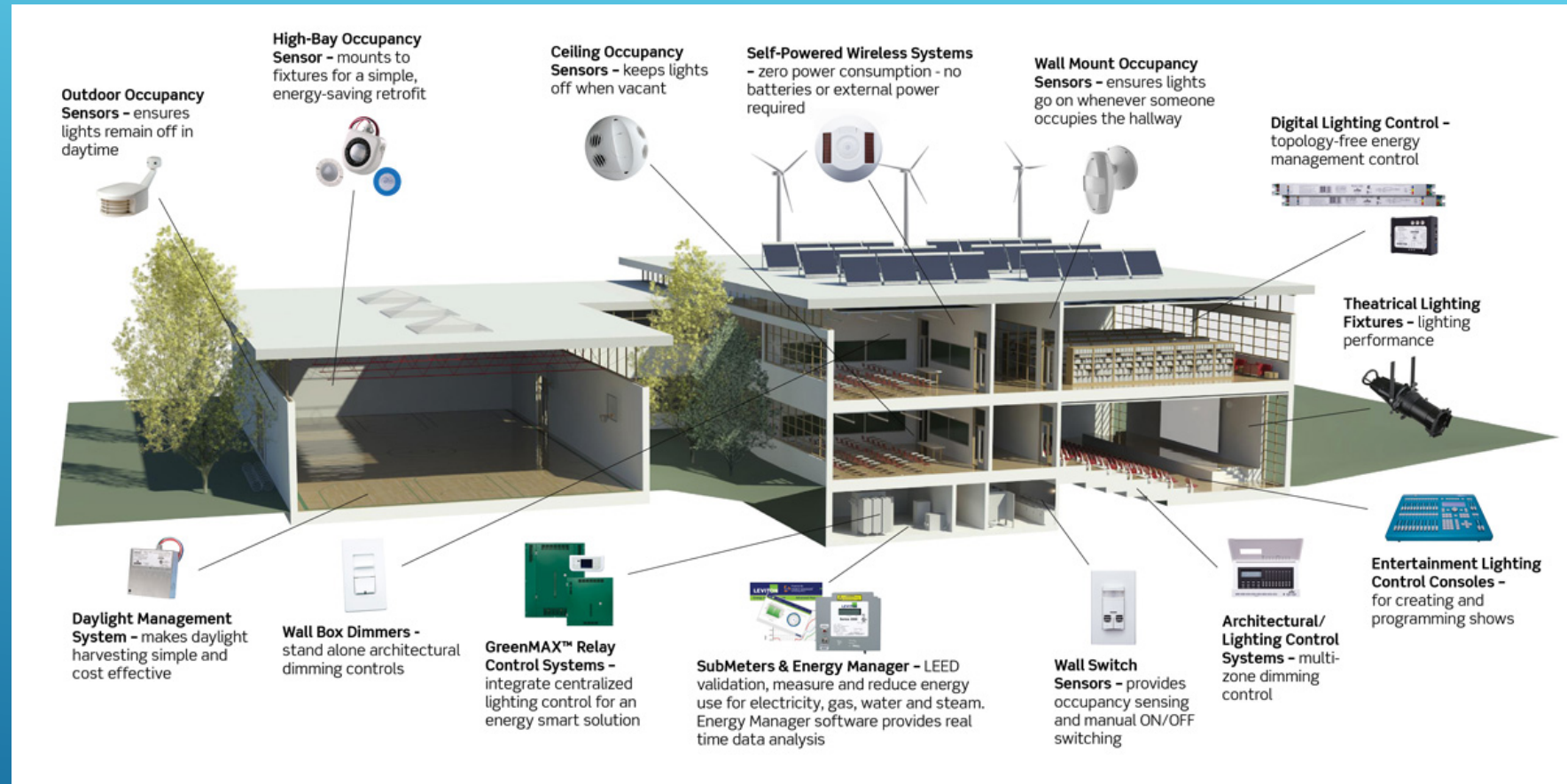
# Natural gas as a back-up fuel.

## Renewable Energy Jobs



Keeping our existing power plants working as back-up energy sources would allow current jobs in the industry to be maintained, while limiting the growth of this industry could assure a transition into a bigger renewable energy market.

# Increase energy efficiency in commercial and residential buildings.



By implementing a LEED certification requirement on any future building projects, the state has the opportunity to reduce electricity consumption by 30 to 60 percent

## Summarizing

Pennsylvania can reach the goals established in the Clean Power Plan by transitioning from coal to renewable energy sources, using natural gas as a back-up fuel, and increasing energy efficiency in buildings throughout the state through LEED requirements and incentives.

